

Datasheet for ABIN7304402  
**anti-KLKB1 antibody (Heavy Chain)**

## 2 Images

[Go to Product page](#)

## Overview

Quantity:	100 µL
Target:	KLKB1
Binding Specificity:	Heavy Chain
Reactivity:	Human
Host:	Rabbit
Clonality:	Polyclonal
Conjugate:	This KLKB1 antibody is un-conjugated
Application:	Western Blotting (WB), Immunohistochemistry (IHC)

## Product Details

Immunogen:	KLH-conjugated synthetic peptide encompassing a sequence within the center region of human Plasma Kallikrein HC.
Specificity:	Recognizes endogenous levels of Plasma Kallikrein HC protein.
Characteristics:	Rabbit polyclonal antibody to Plasma Kallikrein HC
Purification:	The antibody was purified by immunogen affinity chromatography.

## Target Details

Target:	KLKB1
Alternative Name:	Plasma Kallikrein ( <a href="#">KLKB1 Products</a> )
Background:	KLK3, Plasma kallikrein, Fletcher factor, Kininogenin, Plasma prekallikrein

## Target Details

Gene ID:	3818
UniProt:	<a href="#">P03952</a>
Pathways:	<a href="#">Complement System</a> , <a href="#">Brown Fat Cell Differentiation</a>

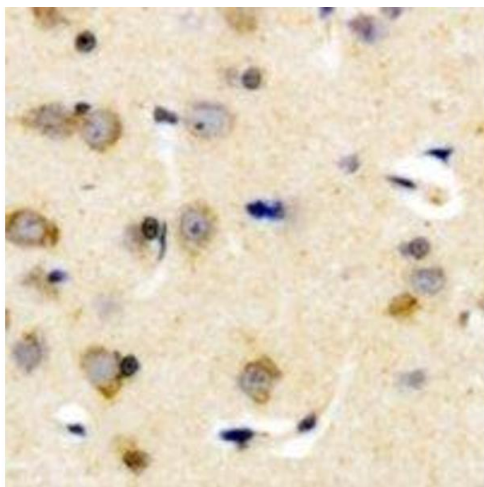
## Application Details

Application Notes:	WB (1:500 - 1:1000), IH (1:100 - 1:200)
Restrictions:	For Research Use only

## Handling

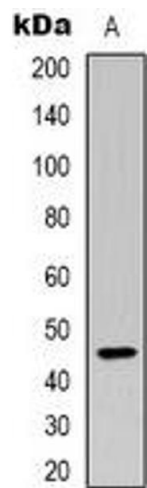
Format:	Liquid
Buffer:	Liquid in 0.42 % Potassium phosphate, 0.87 % Sodium chloride, pH 7.3, 30 % glycerol, and 0.01 % sodium azide.
Preservative:	Sodium azide
Precaution of Use:	This product contains Sodium azide: a POISONOUS AND HAZARDOUS SUBSTANCE which should be handled by trained staff only.
Storage:	-20 °C
Storage Comment:	Shipped at 4°C. Upon delivery aliquot and store at -20°C for one year. Avoid freeze/thaw cycles.
Expiry Date:	12 months

## Images



### Immunohistochemistry

**Image 1.** Immunohistochemical analysis of Plasma Kallikrein HC staining in human brain formalin fixed paraffin embedded tissue section. The section was pre-treated using heat mediated antigen retrieval with sodium citrate buffer (pH 6.0). The section was then incub



Western Blotting

**Image 2.** Western blot analysis of Plasma Kallikrein HC expression in Hela (A) whole cell lysates.