

Datasheet for ABIN7304426  
**anti-IL16 antibody (N-Term)**



[Go to Product page](#)

2 Images

## Overview

Quantity:	100 µL
Target:	IL16
Binding Specificity:	N-Term
Reactivity:	Human, Monkey
Host:	Rabbit
Clonality:	Polyclonal
Conjugate:	This IL16 antibody is un-conjugated
Application:	Western Blotting (WB), Immunohistochemistry (IHC)

## Product Details

Immunogen:	KLH-conjugated synthetic peptide encompassing a sequence within the N-term region of human IL-16.
Specificity:	Recognizes endogenous levels of IL-16 protein.
Characteristics:	Rabbit polyclonal antibody to IL-16
Purification:	The antibody was purified by immunogen affinity chromatography.

## Target Details

Target:	IL16
Alternative Name:	IL-16 ( <a href="#">IL16 Products</a> )
Background:	Pro-interleukin-16

## Target Details

Gene ID: 3603

UniProt: [Q14005](#)

## Application Details

Application Notes: WB (1:500 - 1:1000), IH (1:100 - 1:200)

Restrictions: For Research Use only

## Handling

Format: Liquid

Buffer: Liquid in 0.42 % Potassium phosphate, 0.87 % Sodium chloride, pH 7.3, 30 % glycerol, and 0.01 % sodium azide.

Preservative: Sodium azide

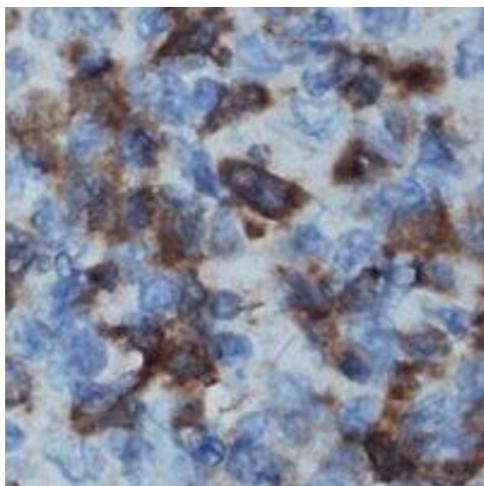
Precaution of Use: This product contains Sodium azide: a POISONOUS AND HAZARDOUS SUBSTANCE which should be handled by trained staff only.

Storage: -20 °C

Storage Comment: Shipped at 4°C. Upon delivery aliquot and store at -20°C for one year. Avoid freeze/thaw cycles.

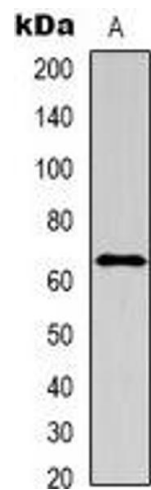
Expiry Date: 12 months

## Images



### Immunohistochemistry

**Image 1.** Immunohistochemical analysis of IL-16 staining in human lymph node formalin fixed paraffin embedded tissue section. The section was pre-treated using heat mediated antigen retrieval with sodium citrate buffer (pH 6.0). The section was then incubated with



Western Blotting

**Image 2.** Western blot analysis of IL-16 expression in A549 (A) whole cell lysates.