

Datasheet for ABIN7304576
anti-WISP3 antibody (N-Term)[Go to Product page](#)

2 Images

Overview

Quantity:	100 µL
Target:	WISP3
Binding Specificity:	N-Term
Reactivity:	Human
Host:	Rabbit
Clonality:	Polyclonal
Conjugate:	This WISP3 antibody is un-conjugated
Application:	Western Blotting (WB), Immunohistochemistry (IHC)

Product Details

Immunogen:	KLH-conjugated synthetic peptide encompassing a sequence within the N-term region of human WISP3.
Specificity:	Recognizes endogenous levels of WISP3 protein.
Characteristics:	Rabbit polyclonal antibody to WISP3
Purification:	The antibody was purified by affinity chromatography.

Target Details

Target:	WISP3
Alternative Name:	WISP3 (WISP3 Products)
Background:	CCN6, WNT1-inducible-signaling pathway protein 3, WISP-3, CCN family member 6

Target Details

Gene ID:	8838
UniProt:	O95389
Pathways:	WNT Signaling , Growth Factor Binding

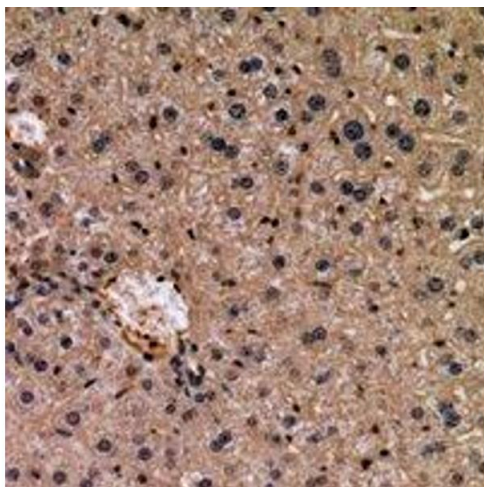
Application Details

Application Notes:	WB (1:500 - 1:2000), IH (1:50 - 1:200)
Restrictions:	For Research Use only

Handling

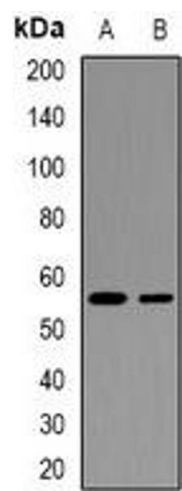
Format:	Liquid
Buffer:	Liquid in 0.42 % Potassium phosphate, 0.87 % Sodium chloride, pH 7.3, 30 % glycerol, and 0.01 % sodium azide.
Preservative:	Sodium azide
Precaution of Use:	This product contains Sodium azide: a POISONOUS AND HAZARDOUS SUBSTANCE which should be handled by trained staff only.
Storage:	-20 °C
Storage Comment:	Shipped at 4°C. Upon delivery aliquot and store at -20°C for one year. Avoid freeze/thaw cycles.
Expiry Date:	12 months

Images



Immunohistochemistry

Image 1. Immunohistochemical analysis of WISP3 staining in human liver cancer formalin fixed paraffin embedded tissue section. The section was pre-treated using heat mediated antigen retrieval with sodium citrate buffer (pH 6.0). The section was then incubated with



Western Blotting

Image 2. Western blot analysis of WISP3 expression in HeLa (A), HepG2 (B) whole cell lysates.