

Datasheet for ABIN7304580  
**anti-BMP10 antibody (C-Term)**



[Go to Product page](#)

1 Image

## Overview

Quantity:	100 µL
Target:	BMP10
Binding Specificity:	C-Term
Reactivity:	Human, Mouse, Rat
Host:	Rabbit
Clonality:	Polyclonal
Conjugate:	This BMP10 antibody is un-conjugated
Application:	Western Blotting (WB)

## Product Details

Immunogen:	KLH-conjugated synthetic peptide encompassing a sequence within the C-term region of human BMP10.
Specificity:	Recognizes endogenous levels of BMP10 protein.
Characteristics:	Rabbit polyclonal antibody to BMP10
Purification:	The antibody was purified by affinity chromatography.

## Target Details

Target:	BMP10
Alternative Name:	BMP10 ( <a href="#">BMP10 Products</a> )
Background:	Bone morphogenetic protein 10, BMP-10

Target Details

Gene ID:	27302, 12154, 500245
UniProt:	<a href="#">O95393</a> , <a href="#">Q9R229</a> , <a href="#">Q4AEG6</a>
Pathways:	<a href="#">Hormone Activity</a> , <a href="#">Regulation of Muscle Cell Differentiation</a>

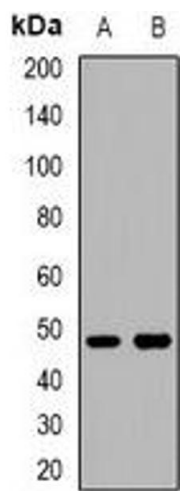
Application Details

Application Notes:	WB (1:500 - 1:2000)
Restrictions:	For Research Use only

Handling

Format:	Liquid
Buffer:	Liquid in 0.42 % Potassium phosphate, 0.87 % Sodium chloride, pH 7.3, 30 % glycerol, and 0.01 % sodium azide.
Preservative:	Sodium azide
Precaution of Use:	This product contains Sodium azide: a POISONOUS AND HAZARDOUS SUBSTANCE which should be handled by trained staff only.
Storage:	-20 °C
Storage Comment:	Shipped at 4°C. Upon delivery aliquot and store at -20°C for one year. Avoid freeze/thaw cycles.
Expiry Date:	12 months

Images



Western Blotting

**Image 1.** Western blot analysis of BMP10 expression in mouse lung (A), mouse brain (B) whole cell lysates.