

Datasheet for ABIN7304600

**anti-PTH LH antibody****1** Image[Go to Product page](#)

## Overview

Quantity:	100 µL
Target:	PTH LH
Reactivity:	Human, Chicken, Dog, Cow
Host:	Rabbit
Clonality:	Polyclonal
Conjugate:	This PTH LH antibody is un-conjugated
Application:	Western Blotting (WB)

## Product Details

Immunogen:	KLH-conjugated synthetic peptide encompassing a sequence within the center region of human PTHrP.
Specificity:	Recognizes endogenous levels of PTHrP protein.
Characteristics:	Rabbit polyclonal antibody to PTHrP
Purification:	The antibody was purified by affinity chromatography.

## Target Details

Target:	PTH LH
Alternative Name:	PTHrP ( <a href="#">PTH LH Products</a> )
Background:	PTHrP, Parathyroid hormone-related protein, PTH-rP, PTHrP
Gene ID:	5744

Target Details

UniProt:	P12272
Pathways:	Hormone Activity, cAMP Metabolic Process

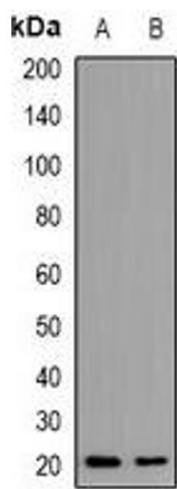
Application Details

Application Notes:	WB (1:500 - 1:2000)
Restrictions:	For Research Use only

Handling

Format:	Liquid
Buffer:	Liquid in 0.42 % Potassium phosphate, 0.87 % Sodium chloride, pH 7.3, 30 % glycerol, and 0.01 % sodium azide.
Preservative:	Sodium azide
Precaution of Use:	This product contains Sodium azide: a POISONOUS AND HAZARDOUS SUBSTANCE which should be handled by trained staff only.
Storage:	-20 °C
Storage Comment:	Shipped at 4°C. Upon delivery aliquot and store at -20°C for one year. Avoid freeze/thaw cycles.
Expiry Date:	12 months

Images



Western Blotting

**Image 1.** Western blot analysis of PTHRP expression in Hela (A), HepG2 (B) whole cell lysates.