

Datasheet for ABIN7304601
anti-PTH LH antibody



[Go to Product page](#)

1 Image

Overview

Quantity:	30 µL
Target:	PTH LH
Reactivity:	Human, Chicken, Dog, Cow
Host:	Rabbit
Clonality:	Polyclonal
Conjugate:	This PTH LH antibody is un-conjugated
Application:	Western Blotting (WB)

Product Details

Immunogen:	KLH-conjugated synthetic peptide encompassing a sequence within the center region of human PTHrP.
Specificity:	Recognizes endogenous levels of PTHrP protein.
Characteristics:	Rabbit polyclonal antibody to PTHrP
Purification:	The antibody was purified by affinity chromatography.

Target Details

Target:	PTH LH
Alternative Name:	PTHrP (PTH LH Products)
Background:	PTHrP, Parathyroid hormone-related protein, PTH-rP, PTHrP
Gene ID:	5744

Target Details

UniProt: [P12272](#)

Pathways: [Hormone Activity, cAMP Metabolic Process](#)

Application Details

Application Notes: WB (1:500 - 1:2000)

Restrictions: For Research Use only

Handling

Format: Liquid

Buffer: Liquid in 0.42 % Potassium phosphate, 0.87 % Sodium chloride, pH 7.3, 30 % glycerol, and 0.01 % sodium azide.

Preservative: Sodium azide

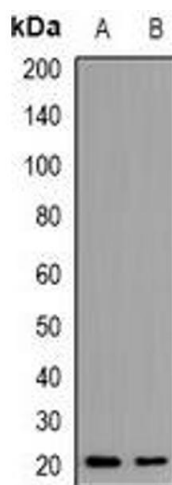
Precaution of Use: This product contains Sodium azide: a POISONOUS AND HAZARDOUS SUBSTANCE which should be handled by trained staff only.

Storage: -20 °C

Storage Comment: Shipped at 4°C. Upon delivery aliquot and store at -20°C for one year. Avoid freeze/thaw cycles.

Expiry Date: 12 months

Images



Western Blotting

Image 1. Western blot analysis of PTHRP expression in HeLa (A), HepG2 (B) whole cell lysates.