

Datasheet for ABIN7304624

**Rabbit anti-Human IgM (C-Term) Antibody**[Go to Product page](#)**1** Image

## Overview

Quantity:	100 µL
Target:	IgM
Binding Specificity:	C-Term
Reactivity:	Human, Mouse
Host:	Rabbit
Clonality:	Polyclonal
Application:	Western Blotting (WB)

## Product Details

Immunogen:	KLH-conjugated synthetic peptide encompassing a sequence within the C-term region of human IgM.
Specificity:	Recognizes endogenous levels of IgM protein.
Characteristics:	Rabbit polyclonal antibody to IgM
Purification:	The antibody was purified by affinity chromatography.

## Target Details

Target:	IgM
Abstract:	<a href="#">IgM Products</a>
Target Type:	Antibody
Background:	Ig mu chain C region

## Target Details

Gene ID: 3507, 16019

UniProt: [P01871](#), [P01872](#)

## Application Details

Application Notes: WB (1:500 - 1:2000)

Restrictions: For Research Use only

## Handling

Format: Liquid

Buffer: Liquid in 0.42 % Potassium phosphate, 0.87 % Sodium chloride, pH 7.3, 30 % glycerol, and 0.01 % sodium azide.

Preservative: Sodium azide

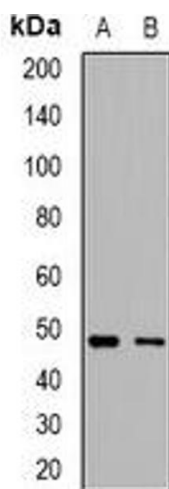
Precaution of Use: This product contains Sodium azide: a POISONOUS AND HAZARDOUS SUBSTANCE which should be handled by trained staff only.

Storage: -20 °C

Storage Comment: Shipped at 4°C. Upon delivery aliquot and store at -20°C for one year. Avoid freeze/thaw cycles.

Expiry Date: 12 months

## Images



### Western Blotting

**Image 1.** Western blot analysis of IgM expression in HepG2 (A), Raji (B) whole cell lysates.