

Datasheet for ABIN7304684
anti-CREB3 antibody



[Go to Product page](#)

1 Image

Overview

Quantity:	100 µL
Target:	CREB3
Reactivity:	Human, Mouse, Cow
Host:	Rabbit
Clonality:	Polyclonal
Conjugate:	This CREB3 antibody is un-conjugated
Application:	Western Blotting (WB)

Product Details

Immunogen:	KLH-conjugated synthetic peptide encompassing a sequence within the center region of human CREB3.
Specificity:	Recognizes endogenous levels of CREB3 protein.
Characteristics:	Rabbit polyclonal antibody to CREB3
Purification:	The antibody was purified by affinity chromatography.

Target Details

Target:	CREB3
Alternative Name:	CREB3 (CREB3 Products)
Background:	LZIP, Cyclic AMP-responsive element-binding protein 3, CREB-3, cAMP-responsive element-binding protein 3, Leucine zipper protein, Luman, Transcription factor LZIP-alpha

Target Details

Gene ID:	10488
UniProt:	O43889 , Q61817
Pathways:	Thyroid Hormone Synthesis , Myometrial Relaxation and Contraction , ER-Nucleus Signaling , Maintenance of Protein Location , Unfolded Protein Response

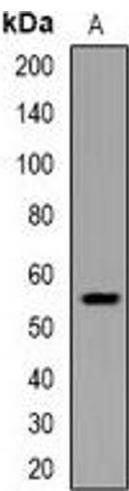
Application Details

Application Notes:	WB (1:500 - 1:2000)
Restrictions:	For Research Use only

Handling

Format:	Liquid
Buffer:	Liquid in 0.42 % Potassium phosphate, 0.87 % Sodium chloride, pH 7.3, 30 % glycerol, and 0.01 % sodium azide.
Preservative:	Sodium azide
Precaution of Use:	This product contains Sodium azide: a POISONOUS AND HAZARDOUS SUBSTANCE which should be handled by trained staff only.
Storage:	-20 °C
Storage Comment:	Shipped at 4°C. Upon delivery aliquot and store at -20°C for one year. Avoid freeze/thaw cycles.
Expiry Date:	12 months

Images



Western Blotting

Image 1. Western blot analysis of CREB3 expression in NIH3T3 (A) whole cell lysates.