

Datasheet for ABIN7304686  
**anti-EDNRB antibody (N-Term)**



[Go to Product page](#)

2 Images

## Overview

Quantity:	100 µL
Target:	EDNRB
Binding Specificity:	N-Term
Reactivity:	Human, Dog
Host:	Rabbit
Clonality:	Polyclonal
Conjugate:	This EDNRB antibody is un-conjugated
Application:	Western Blotting (WB), Immunohistochemistry (IHC)

## Product Details

Immunogen:	KLH-conjugated synthetic peptide encompassing a sequence within the N-term region of human Endothelin B Receptor.
Specificity:	Recognizes endogenous levels of Endothelin B Receptor protein.
Characteristics:	Rabbit polyclonal antibody to Endothelin B Receptor
Purification:	The antibody was purified by affinity chromatography.

## Target Details

Target:	EDNRB
Alternative Name:	Endothelin B Receptor ( <a href="#">EDNRB Products</a> )
Background:	ETRB, Endothelin B receptor, ET-B, ET-BR, Endothelin receptor non-selective type

## Target Details

Gene ID:	1910
UniProt:	<a href="#">P24530</a>
Pathways:	<a href="#">Cellular Response to Molecule of Bacterial Origin, cAMP Metabolic Process</a>

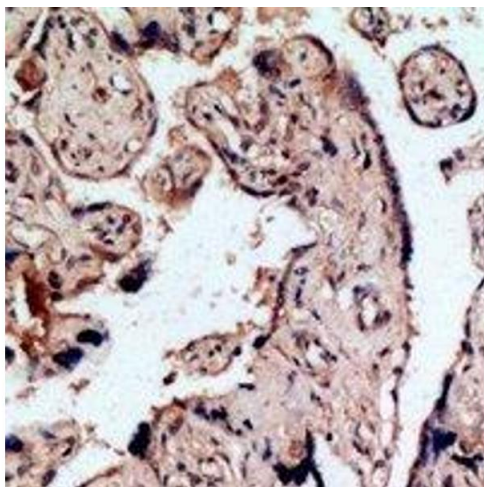
## Application Details

Application Notes:	WB (1:500 - 1:2000), IH (1:50 - 1:200)
Restrictions:	For Research Use only

## Handling

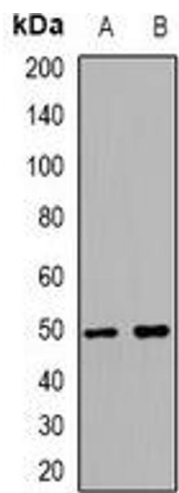
Format:	Liquid
Buffer:	Liquid in 0.42 % Potassium phosphate, 0.87 % Sodium chloride, pH 7.3, 30 % glycerol, and 0.01 % sodium azide.
Preservative:	Sodium azide
Precaution of Use:	This product contains Sodium azide: a POISONOUS AND HAZARDOUS SUBSTANCE which should be handled by trained staff only.
Storage:	-20 °C
Storage Comment:	Shipped at 4°C. Upon delivery aliquot and store at -20°C for one year. Avoid freeze/thaw cycles.
Expiry Date:	12 months

## Images



### Immunohistochemistry

**Image 1.** Immunohistochemical analysis of Endothelin B Receptor staining in human placenta formalin fixed paraffin embedded tissue section. The section was pre-treated using heat mediated antigen retrieval with sodium citrate buffer (pH 6.0). The section was then i



Western Blotting

**Image 2.** Western blot analysis of Endothelin B Receptor expression in HeLa (A), LOVO (B) whole cell lysates.