

Datasheet for ABIN7304712
anti-COL4A1 antibody (C-Term)



[Go to Product page](#)

1 Image

Overview

Quantity:	100 µL
Target:	COL4A1
Binding Specificity:	C-Term
Reactivity:	Human, Mouse, Rat
Host:	Rabbit
Clonality:	Polyclonal
Conjugate:	This COL4A1 antibody is un-conjugated
Application:	Western Blotting (WB)

Product Details

Immunogen:	KLH-conjugated synthetic peptide encompassing a sequence within the C-term region of human Collagen 4 alpha 1.
Specificity:	Recognizes endogenous levels of Collagen 4 alpha 1 protein.
Characteristics:	Rabbit polyclonal antibody to Collagen 4 alpha 1
Purification:	The antibody was purified by affinity chromatography.

Target Details

Target:	COL4A1
Alternative Name:	Collagen 4 alpha 1 (COL4A1 Products)
Background:	Collagen alpha-1(IV) chain

Target Details

Gene ID:	1282, 12826
UniProt:	P02462 , P02463
Pathways:	Skeletal Muscle Fiber Development , Growth Factor Binding

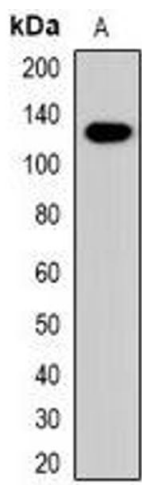
Application Details

Application Notes:	WB (1:500 - 1:2000)
Restrictions:	For Research Use only

Handling

Format:	Liquid
Buffer:	Liquid in 0.42 % Potassium phosphate, 0.87 % Sodium chloride, pH 7.3, 30 % glycerol, and 0.01 % sodium azide.
Preservative:	Sodium azide
Precaution of Use:	This product contains Sodium azide: a POISONOUS AND HAZARDOUS SUBSTANCE which should be handled by trained staff only.
Storage:	-20 °C
Storage Comment:	Shipped at 4°C. Upon delivery aliquot and store at -20°C for one year. Avoid freeze/thaw cycles.
Expiry Date:	12 months

Images



Western Blotting

Image 1. Western blot analysis of Collagen 4 alpha 1 expression in mouse brain (A) whole cell lysates.