

Datasheet for ABIN7305032
anti-alpha Tubulin antibody



[Go to Product page](#)

4 Images

Overview

Quantity:	100 µL
Target:	alpha Tubulin (TUBA1)
Reactivity:	Human, Mouse, Rat
Host:	Mouse
Clonality:	Monoclonal
Conjugate:	This alpha Tubulin antibody is un-conjugated
Application:	Western Blotting (WB), Immunohistochemistry (IHC), Immunofluorescence (IF), Immunoprecipitation (IP), Immunochromatography (IC)

Product Details

Immunogen:	Recombinant protein corresponding to human Alpha-tubulin.
Specificity:	Recognizes endogenous levels of Alpha-tubulin protein.
Characteristics:	Mouse monoclonal to Alpha-tubulin

Target Details

Target:	alpha Tubulin (TUBA1)
Alternative Name:	alpha-Tubulin (TUBA1 Products)
Background:	TUBA3, Tubulin alpha-1A chain, Alpha-tubulin 3, Tubulin B-alpha-1, Tubulin alpha-3 chain
Gene ID:	7846, 10376, 22142
UniProt:	Q71U36 , P68363 , P68369 , P05213 , P68370 , Q6P9V9

Target Details

Pathways: [Microtubule Dynamics](#)

Application Details

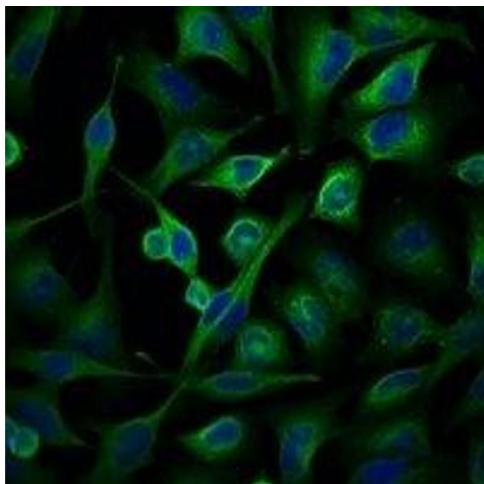
Application Notes: WB (1:5000 - 1:10000), IH (1:200 - 1:500), IF/IC (1:100 - 1:200), IP (1:100 - 1:200)

Restrictions: For Research Use only

Handling

Format:	Liquid
Buffer:	Liquid in 0.42 % Potassium phosphate, 0.87 % Sodium chloride, pH 7.3, 30 % glycerol, and 0.01 % sodium azide.
Preservative:	Sodium azide
Precaution of Use:	This product contains Sodium azide: a POISONOUS AND HAZARDOUS SUBSTANCE which should be handled by trained staff only.
Storage:	-20 °C
Storage Comment:	Shipped at 4°C. Upon delivery aliquot and store at -20°C for one year. Avoid freeze/thaw cycles.
Expiry Date:	12 months

Images



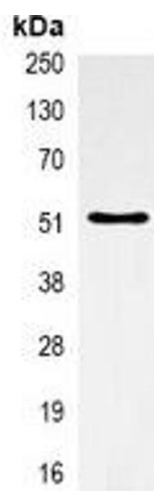
Immunofluorescence

Image 1. Immunofluorescent analysis of Alpha-tubulin staining in HeLa cells. Formalin-fixed cells were permeabilized with 0.1% Triton X-100 in TBS for 5-10 minutes and blocked with 3% BSA-PBS for 30 minutes at room temperature. Cells were probed with the primary a



Immunohistochemistry

Image 2. Immunohistochemical analysis of Alpha-tubulin staining in human colon cancer formalin fixed paraffin embedded tissue section. The section was pre-treated using heat mediated antigen retrieval with sodium citrate buffer (pH 6.0). The section was then incub



Immunoprecipitation

Image 3. Immunoprecipitation of Alpha-tubulin from 0.5mg mouse brain whole cell extract lysate, using Anti-Alpha-tubulin Antibody.

Please check the [product details page](#) for more images. Overall 4 images are available for ABIN7305032.