

Datasheet for ABIN7305138

anti-FH antibody**2** Images[Go to Product page](#)

Overview

Quantity:	100 µL
Target:	FH
Reactivity:	Human, Mouse, Rat
Host:	Mouse
Clonality:	Monoclonal
Conjugate:	This FH antibody is un-conjugated
Application:	Western Blotting (WB), Immunofluorescence (IF), Immunochromatography (IC)

Product Details

Immunogen:	KLH-conjugated synthetic peptide encompassing a sequence of human Fumarase.
Specificity:	Recognizes endogenous levels of Fumarase protein.
Characteristics:	Mouse monoclonal to Fumarase

Target Details

Target:	FH
Alternative Name:	Fumarase (FH Products)
Background:	Fumarate hydratase mitochondrial, Fumarase
Gene ID:	2271, 14194
UniProt:	P07954 , P97807 , P14408

Application Details

Application Notes: WB (1:1000 - 1:3000), IF/IC (1:100 - 1:200)

Restrictions: For Research Use only

Handling

Format: Liquid

Buffer: Liquid in 0.42 % Potassium phosphate, 0.87 % Sodium chloride, pH 7.3, 30 % glycerol, and 0.01 % sodium azide.

Preservative: Sodium azide

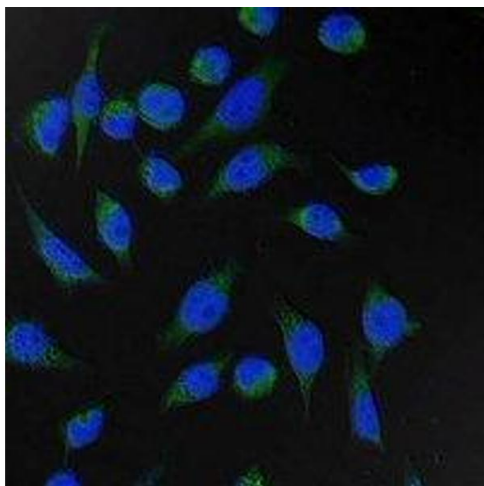
Precaution of Use: This product contains Sodium azide: a POISONOUS AND HAZARDOUS SUBSTANCE which should be handled by trained staff only.

Storage: -20 °C

Storage Comment: Shipped at 4°C. Upon delivery aliquot and store at -20°C for one year. Avoid freeze/thaw cycles.

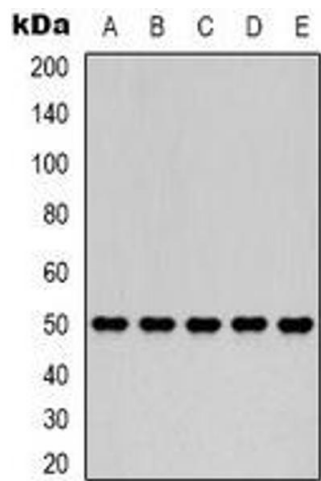
Expiry Date: 12 months

Images



Immunofluorescence

Image 1. Immunofluorescent analysis of Fumarase staining in HeLa cells. Formalin-fixed cells were permeabilized with 0.1% Triton X-100 in TBS for 5-10 minutes and blocked with 3% BSA-PBS for 30 minutes at room temperature. Cells were probed with the primary antibo



Western Blotting

Image 2. Western blot analysis of Fumarase expression in 293T (A), HepG2 (B), Hela (C), mouse brain (D), rat brain (E) whole cell lysates.