

Datasheet for ABIN7305378

anti-EPG5 antibody**2** Images[Go to Product page](#)

Overview

Quantity:	100 µL
Target:	EPG5
Reactivity:	Human, Mouse, Rat
Host:	Rabbit
Clonality:	Polyclonal
Conjugate:	This EPG5 antibody is un-conjugated
Application:	Immunohistochemistry (IHC), Western Blotting (WB)

Product Details

Immunogen:	Recombinant protein corresponding to human EPG5.
Specificity:	Recognizes endogenous levels of EPG5 protein.
Characteristics:	Rabbit polyclonal to EPG5
Purification:	The antibody was purified by affinity chromatography.

Target Details

Target:	EPG5
Alternative Name:	EPG5 (EPG5 Products)
Background:	KIAA1632, Ectopic P granules protein 5 homolog
Gene ID:	57724
UniProt:	Q9HCE0

Application Details

Application Notes: WB (1:1000 - 1:2000), IH (1:200 - 1:500)

Restrictions: For Research Use only

Handling

Format: Liquid

Buffer: Liquid in 0.42 % Potassium phosphate, 0.87 % Sodium chloride, pH 7.3, 30 % glycerol, and 0.01 % sodium azide.

Preservative: Sodium azide

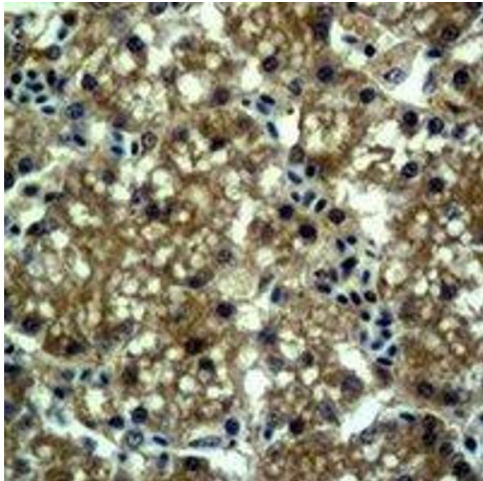
Precaution of Use: This product contains Sodium azide: a POISONOUS AND HAZARDOUS SUBSTANCE which should be handled by trained staff only.

Storage: -20 °C

Storage Comment: Shipped at 4°C. Upon delivery aliquot and store at -20°C for one year. Avoid freeze/thaw cycles.

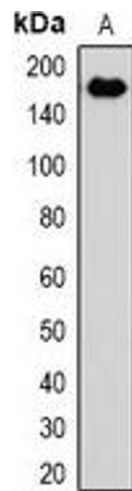
Expiry Date: 12 months

Images



Immunohistochemistry

Image 1. Immunohistochemical analysis of EPG5 staining in mouse liver formalin fixed paraffin embedded tissue section. The section was pre-treated using heat mediated antigen retrieval with sodium citrate buffer (pH 6.0). The section was then incubated with the an



Western Blotting

Image 2. Western blot analysis of EPG5 expression in rat liver (A) whole cell lysates.