

Datasheet for ABIN7305874

**anti-PSME3 antibody****2** Images[Go to Product page](#)

## Overview

Quantity:	100 µL
Target:	PSME3
Reactivity:	Human, Rat
Host:	Rabbit
Clonality:	Polyclonal
Conjugate:	This PSME3 antibody is un-conjugated
Application:	Western Blotting (WB), Immunofluorescence (IF), Immunochromatography (IC)

## Product Details

Immunogen:	Recombinant full length protein of human PA28 gamma
Specificity:	Recognizes endogenous levels of PA28 gamma protein.
Characteristics:	Rabbit polyclonal antibody to PA28 gamma
Purification:	The antibody was purified by immunogen affinity chromatography.

## Target Details

Target:	PSME3
Alternative Name:	PA28 gamma ( <a href="#">PSME3 Products</a> )
Background:	Proteasome activator complex subunit 3, 11S regulator complex subunit gamma, REG-gamma, Activator of multicatalytic protease subunit 3, Ki nuclear autoantigen, Proteasome activator 28 subunit gamma, PA28g, PA28gamma

## Target Details

Gene ID:	10197
UniProt:	<a href="#">P61289</a>
Pathways:	<a href="#">Mitotic G1-G1/S Phases</a> , <a href="#">DNA Replication</a> , <a href="#">Positive Regulation of Endopeptidase Activity</a> , <a href="#">Hepatitis C</a> , <a href="#">Synthesis of DNA</a>

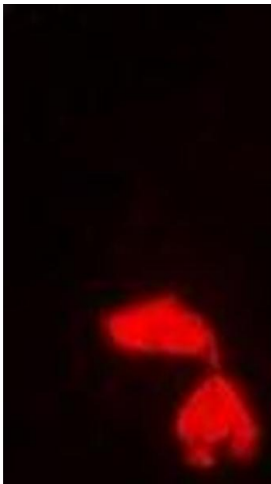
## Application Details

Application Notes:	WB (1:500 - 1:2000), IF/IC (1:50 - 1:200)
Restrictions:	For Research Use only

## Handling

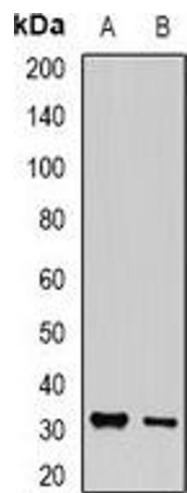
Format:	Liquid
Buffer:	Liquid in 0.42 % Potassium phosphate, 0.87 % Sodium chloride, pH 7.3, 30 % glycerol, and 0.01 % sodium azide.
Preservative:	Sodium azide
Precaution of Use:	This product contains Sodium azide: a POISONOUS AND HAZARDOUS SUBSTANCE which should be handled by trained staff only.
Storage:	-20 °C
Storage Comment:	Shipped at 4°C. Upon delivery aliquot and store at -20°C for one year. Avoid freeze/thaw cycles.
Expiry Date:	12 months

## Images



### Immunofluorescence

**Image 1.** Immunofluorescent analysis of PA28 gamma staining in Hela cells. Formalin-fixed cells were permeabilized with 0.1% Triton X-100 in TBS for 5-10 minutes and blocked with 3% BSA-PBS for 30 minutes at room temperature. Cells were probed with the primary anti



Western Blotting

**Image 2.** Western blot analysis of PA28 gamma expression in MCF7 (A), PC12 (B) whole cell lysates.