

Datasheet for ABIN7305894

anti-eEF1A1 antibody**2** Images[Go to Product page](#)

Overview

Quantity:	100 µL
Target:	eEF1A1 (EEF1A1)
Reactivity:	Human, Mouse, Rat
Host:	Rabbit
Clonality:	Polyclonal
Conjugate:	This eEF1A1 antibody is un-conjugated
Application:	Western Blotting (WB), Immunofluorescence (IF), Immunochromatography (IC)

Product Details

Immunogen:	Recombinant full length protein of human EEF1A1
Specificity:	Recognizes endogenous levels of EEF1A1 protein.
Characteristics:	Rabbit polyclonal antibody to EEF1A1
Purification:	The antibody was purified by immunogen affinity chromatography.

Target Details

Target:	eEF1A1 (EEF1A1)
Alternative Name:	EEF1A1 (EEF1A1 Products)
Background:	EEF1A, EF1A, LENG7, Elongation factor 1-alpha 1, EF-1-alpha-1, Elongation factor Tu, EF-Tu, Eukaryotic elongation factor 1 A-1, eEF1A-1, Leukocyte receptor cluster member 7
Gene ID:	1915, 13627, 171361

Target Details

UniProt: [P68104](#), [P10126](#), [P62630](#)

Application Details

Application Notes: WB (1:500 - 1:2000), IF/IC (1:20 - 1:100)

Restrictions: For Research Use only

Handling

Format: Liquid

Buffer: Liquid in 0.42 % Potassium phosphate, 0.87 % Sodium chloride, pH 7.3, 30 % glycerol, and 0.01 % sodium azide.

Preservative: Sodium azide

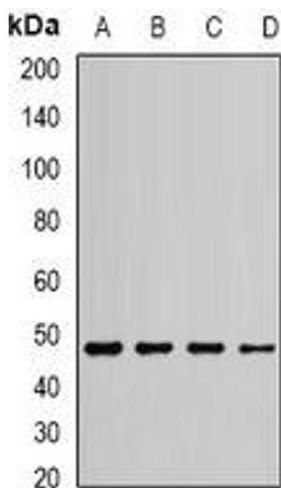
Precaution of Use: This product contains Sodium azide: a POISONOUS AND HAZARDOUS SUBSTANCE which should be handled by trained staff only.

Storage: -20 °C

Storage Comment: Shipped at 4°C. Upon delivery aliquot and store at -20°C for one year. Avoid freeze/thaw cycles.

Expiry Date: 12 months

Images



Western Blotting

Image 1. Western blot analysis of EEF1A1 expression in MCF7 (A), Jurkat (B), HepG2 (C), SHSY5Y (D) whole cell lysates.



Immunofluorescence

Image 2. Immunofluorescent analysis of EEF1A1 staining in HeLa cells. Formalin-fixed cells were permeabilized with 0.1% Triton X-100 in TBS for 5-10 minutes and blocked with 3% BSA-PBS for 30 minutes at room temperature. Cells were probed with the primary antibody