

Datasheet for ABIN7305950
anti-SELENBP1 antibody[Go to Product page](#)

2 Images

Overview

Quantity:	100 µL
Target:	SELENBP1
Reactivity:	Human, Mouse, Rat
Host:	Rabbit
Clonality:	Polyclonal
Conjugate:	This SELENBP1 antibody is un-conjugated
Application:	Western Blotting (WB), Immunofluorescence (IF), Immunochromatography (IC)

Product Details

Immunogen:	Recombinant full length protein of human SELENBP1
Specificity:	Recognizes endogenous levels of SELENBP1 protein.
Characteristics:	Rabbit polyclonal antibody to SELENBP1
Purification:	The antibody was purified by immunogen affinity chromatography.

Target Details

Target:	SELENBP1
Alternative Name:	SELENBP1 (SELENBP1 Products)
Background:	SBP, Selenium-binding protein 1, 56 kDa selenium-binding protein, SBP56, SP56
Gene ID:	8991, 20341, 140927
UniProt:	Q13228 , P17563 , Q8VIF7

Target Details

Pathways: [Brown Fat Cell Differentiation](#)

Application Details

Application Notes: WB (1:500 - 1:2000), IF/IC (1:50 - 1:200)

Restrictions: For Research Use only

Handling

Format: Liquid

Buffer: Liquid in 0.42 % Potassium phosphate, 0.87 % Sodium chloride, pH 7.3, 30 % glycerol, and 0.01 % sodium azide.

Preservative: Sodium azide

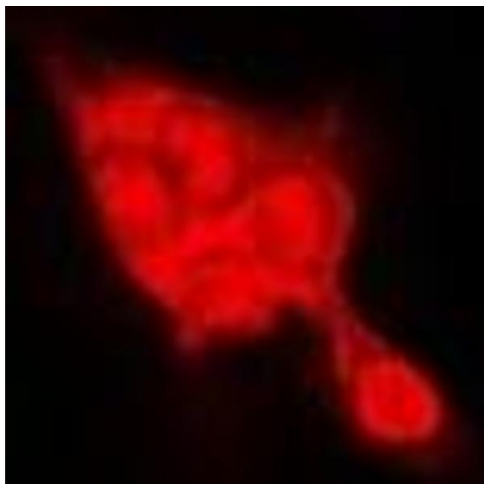
Precaution of Use: This product contains Sodium azide: a POISONOUS AND HAZARDOUS SUBSTANCE which should be handled by trained staff only.

Storage: -20 °C

Storage Comment: Shipped at 4°C. Upon delivery aliquot and store at -20°C for one year. Avoid freeze/thaw cycles.

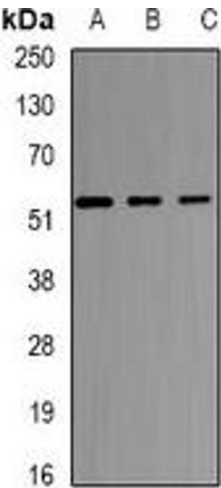
Expiry Date: 12 months

Images



Immunofluorescence

Image 1. Immunofluorescent analysis of SELENBP1 staining in Hela cells. Formalin-fixed cells were permeabilized with 0.1% Triton X-100 in TBS for 5-10 minutes and blocked with 3% BSA-PBS for 30 minutes at room temperature. Cells were probed with the primary antibo



Western Blotting

Image 2. Western blot analysis of SELENBP1 expression in HT29 (A), K562 (B), mouse kidney (C) whole cell lysates.