

Datasheet for ABIN7305954

anti-ERG antibody

3 Images

[Go to Product page](#)

Overview

Quantity:	100 µL
Target:	ERG
Reactivity:	Human, Mouse, Rat
Host:	Rabbit
Clonality:	Polyclonal
Conjugate:	This ERG antibody is un-conjugated
Application:	Western Blotting (WB), Immunohistochemistry (IHC), Immunofluorescence (IF), Immunochromatography (IC)

Product Details

Immunogen:	Recombinant full length protein of human ERG
Specificity:	Recognizes endogenous levels of ERG protein.
Characteristics:	Rabbit polyclonal antibody to ERG
Purification:	The antibody was purified by immunogen affinity chromatography.

Target Details

Target:	ERG
Alternative Name:	ERG (ERG Products)
Background:	Transcriptional regulator ERG, Transforming protein ERG
Gene ID:	2078, 13876

Target Details

UniProt: [P11308](#), [P81270](#)

Application Details

Application Notes: WB (1:500 - 1:2000), IH (1:50 - 1:200), IF/IC (1:50 - 1:200)

Restrictions: For Research Use only

Handling

Format: Liquid

Buffer: Liquid in 0.42 % Potassium phosphate, 0.87 % Sodium chloride, pH 7.3, 30 % glycerol, and 0.01 % sodium azide.

Preservative: Sodium azide

Precaution of Use: This product contains Sodium azide: a POISONOUS AND HAZARDOUS SUBSTANCE which should be handled by trained staff only.

Storage: -20 °C

Storage Comment: Shipped at 4°C. Upon delivery aliquot and store at -20°C for one year. Avoid freeze/thaw cycles.

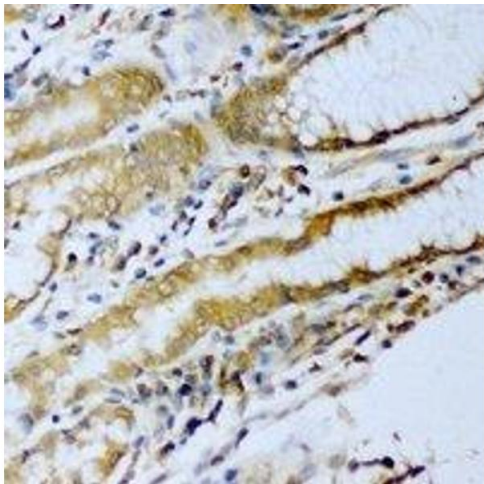
Expiry Date: 12 months

Images



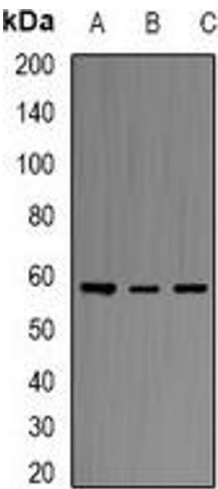
Immunofluorescence

Image 1. Immunofluorescent analysis of ERG staining in Hela cells. Formalin-fixed cells were permeabilized with 0.1% Triton X-100 in TBS for 5-10 minutes and blocked with 3% BSA-PBS for 30 minutes at room temperature. Cells were probed with the primary antibody in



Immunohistochemistry

Image 2. Immunohistochemical analysis of ERG staining in human stomach cancer formalin fixed paraffin embedded tissue section. The section was pre-treated using heat mediated antigen retrieval with sodium citrate buffer (pH 6.0). The section was then incubated with



Western Blotting

Image 3. Western blot analysis of ERG expression in MCF7 (A), THP1 (B), Hela (C) whole cell lysates.