



[Go to Product page](#)

Datasheet for ABIN7305960

anti-HFE antibody

2 Images

Overview

Quantity:	100 µL
Target:	HFE
Reactivity:	Human
Host:	Rabbit
Clonality:	Polyclonal
Conjugate:	This HFE antibody is un-conjugated
Application:	Western Blotting (WB), Immunofluorescence (IF), Immunochromatography (IC)

Product Details

Immunogen:	Recombinant full length protein of human HFE
Specificity:	Recognizes endogenous levels of HFE protein.
Characteristics:	Rabbit polyclonal antibody to HFE
Purification:	The antibody was purified by immunogen affinity chromatography.

Target Details

Target:	HFE
Alternative Name:	HFE (HFE Products)
Background:	HLAH, Hereditary hemochromatosis protein, HLA-H
Gene ID:	3077
UniProt:	Q30201

Target Details

Pathways: [Transition Metal Ion Homeostasis](#), [Regulation of Leukocyte Mediated Immunity](#), [Positive Regulation of Immune Effector Process](#)

Application Details

Application Notes: WB (1:500 - 1:2000), IF/IC (1:50 - 1:200)

Restrictions: For Research Use only

Handling

Format: Liquid

Buffer: Liquid in 0.42 % Potassium phosphate, 0.87 % Sodium chloride, pH 7.3, 30 % glycerol, and 0.01 % sodium azide.

Preservative: Sodium azide

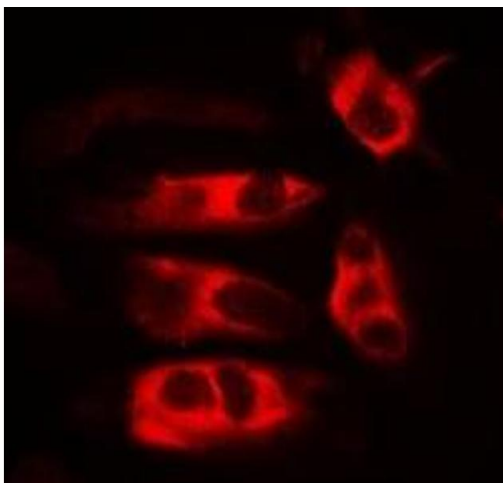
Precaution of Use: This product contains Sodium azide: a POISONOUS AND HAZARDOUS SUBSTANCE which should be handled by trained staff only.

Storage: -20 °C

Storage Comment: Shipped at 4°C. Upon delivery aliquot and store at -20°C for one year. Avoid freeze/thaw cycles.

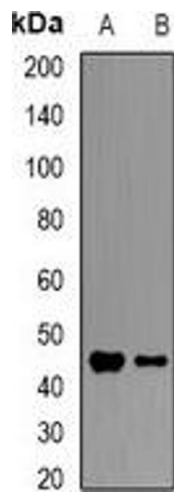
Expiry Date: 12 months

Images



Immunofluorescence

Image 1. Immunofluorescent analysis of HFE staining in MCF7 cells. Formalin-fixed cells were permeabilized with 0.1% Triton X-100 in TBS for 5-10 minutes and blocked with 3% BSA-PBS for 30 minutes at room temperature. Cells were probed with the primary antibody in



Western Blotting

Image 2. Western blot analysis of HFE expression in mouse heart (A), mouse liver (B) whole cell lysates.