

Datasheet for ABIN7305964
anti-CBS antibody



[Go to Product page](#)

3 Images

Overview

Quantity:	100 µL
Target:	CBS
Reactivity:	Human, Mouse, Rat
Host:	Rabbit
Clonality:	Polyclonal
Conjugate:	This CBS antibody is un-conjugated
Application:	Western Blotting (WB), Immunohistochemistry (IHC), Immunofluorescence (IF), Immunochromatography (IC)

Product Details

Immunogen:	Recombinant full length protein of human CBS
Specificity:	Recognizes endogenous levels of CBS protein.
Characteristics:	Rabbit polyclonal antibody to CBS
Purification:	The antibody was purified by immunogen affinity chromatography.

Target Details

Target:	CBS
Alternative Name:	CBS (CBS Products)
Background:	Cystathionine beta-synthase, Beta-thionase, Serine sulfhydrase
Gene ID:	102724560, 875, 12411

Target Details

UniProt: [P35520](#), [Q91WT9](#), [P32232](#)

Application Details

Application Notes: WB (1:500 - 1:2000), IH (1:50 - 1:200), IF/IC (1:50 - 1:200)

Restrictions: For Research Use only

Handling

Format: Liquid

Buffer: Liquid in 0.42 % Potassium phosphate, 0.87 % Sodium chloride, pH 7.3, 30 % glycerol, and 0.01 % sodium azide.

Preservative: Sodium azide

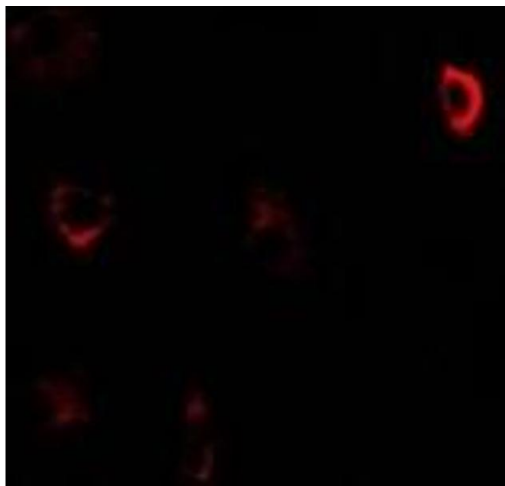
Precaution of Use: This product contains Sodium azide: a POISONOUS AND HAZARDOUS SUBSTANCE which should be handled by trained staff only.

Storage: -20 °C

Storage Comment: Shipped at 4°C. Upon delivery aliquot and store at -20°C for one year. Avoid freeze/thaw cycles.

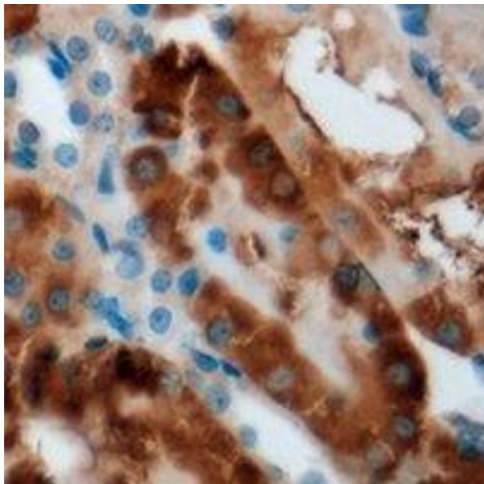
Expiry Date: 12 months

Images



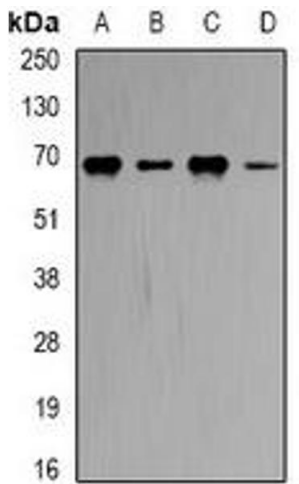
Immunofluorescence

Image 1. Immunofluorescent analysis of CBS staining in U2OS cells. Formalin-fixed cells were permeabilized with 0.1% Triton X-100 in TBS for 5-10 minutes and blocked with 3% BSA-PBS for 30 minutes at room temperature. Cells were probed with the primary antibody in



Immunohistochemistry

Image 2. Immunohistochemical analysis of CBS staining in mouse kidney formalin fixed paraffin embedded tissue section. The section was pre-treated using heat mediated antigen retrieval with sodium citrate buffer (pH 6.0). The section was then incubated with the an



Western Blotting

Image 3. Western blot analysis of CBS expression in Hela (A), MCF7 (B), Romas (C), mouse brain (D) whole cell lysates.