

Datasheet for ABIN7305978

anti-PSMC5 antibody

3 Images

[Go to Product page](#)

Overview

Quantity:	100 µL
Target:	PSMC5
Reactivity:	Human, Mouse, Rat
Host:	Rabbit
Clonality:	Polyclonal
Conjugate:	This PSMC5 antibody is un-conjugated
Application:	Western Blotting (WB), Immunohistochemistry (IHC), Immunofluorescence (IF), Immunochromatography (IC)

Product Details

Immunogen:	Recombinant full length protein of human PSMC5
Specificity:	Recognizes endogenous levels of PSMC5 protein.
Characteristics:	Rabbit polyclonal antibody to PSMC5
Purification:	The antibody was purified by immunogen affinity chromatography.

Target Details

Target:	PSMC5
Alternative Name:	PSMC5 (PSMC5 Products)
Background:	SUG1, 26S protease regulatory subunit 8, 26S proteasome AAA-ATPase subunit RPT6, Proteasome 26S subunit ATPase 5, Proteasome subunit p45, Thyroid hormone receptor- interacting protein 1, TRIP1, p45/SUG

Target Details

Gene ID:	5705, 19184, 81827
UniProt:	P62195 , P62196 , P62198
Pathways:	Mitotic G1-G1/S Phases , DNA Replication , Synthesis of DNA , Ubiquitin Proteasome Pathway

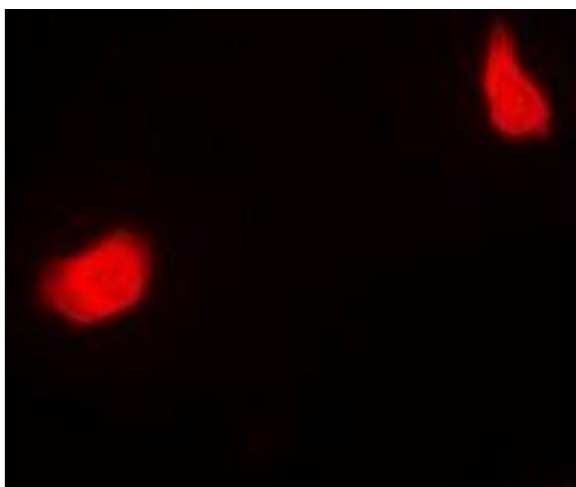
Application Details

Application Notes:	WB (1:500 - 1:2000), IH (1:50 - 1:200), IF/IC (1:50 - 1:200)
Restrictions:	For Research Use only

Handling

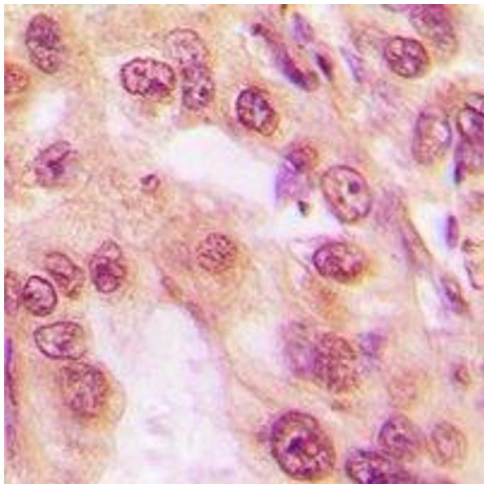
Format:	Liquid
Buffer:	Liquid in 0.42 % Potassium phosphate, 0.87 % Sodium chloride, pH 7.3, 30 % glycerol, and 0.01 % sodium azide.
Preservative:	Sodium azide
Precaution of Use:	This product contains Sodium azide: a POISONOUS AND HAZARDOUS SUBSTANCE which should be handled by trained staff only.
Storage:	-20 °C
Storage Comment:	Shipped at 4°C. Upon delivery aliquot and store at -20°C for one year. Avoid freeze/thaw cycles.
Expiry Date:	12 months

Images



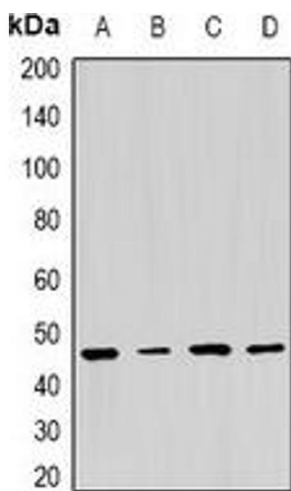
Immunofluorescence

Image 1. Immunofluorescent analysis of PSMC5 staining in MCF7 cells. Formalin-fixed cells were permeabilized with 0.1% Triton X-100 in TBS for 5-10 minutes and blocked with 3% BSA-PBS for 30 minutes at room temperature. Cells were probed with the primary antibody



Immunohistochemistry

Image 2. Immunohistochemical analysis of PSMC5 staining in human lung cancer formalin fixed paraffin embedded tissue section. The section was pre-treated using heat mediated antigen retrieval with sodium citrate buffer (pH 6.0). The section was then incubated with



Western Blotting

Image 3. Western blot analysis of PSMC5 expression in HepG2 (A), MCF7 (B), NIH3T3 (C), PC12 (D) whole cell lysates.