



[Go to Product page](#)

Datasheet for ABIN7305982

anti-SIN3A antibody

2 Images

Overview

Quantity:	100 µL
Target:	SIN3A
Reactivity:	Human, Mouse, Rat
Host:	Rabbit
Clonality:	Polyclonal
Conjugate:	This SIN3A antibody is un-conjugated
Application:	Western Blotting (WB), Immunofluorescence (IF), Immunoprecipitation (IP), Chromatin Immunoprecipitation (ChIP), Immunochromatography (IC)

Product Details

Immunogen:	Recombinant full length protein of human SIN3A
Specificity:	Recognizes endogenous levels of SIN3A protein.
Characteristics:	Rabbit polyclonal antibody to SIN3A
Purification:	The antibody was purified by immunogen affinity chromatography.

Target Details

Target:	SIN3A
Alternative Name:	SIN3A (SIN3A Products)
Background:	Paired amphipathic helix protein Sin3a, Histone deacetylase complex subunit Sin3a, Transcriptional corepressor Sin3a

Target Details

Gene ID:	25942, 20466
UniProt:	Q96ST3 , Q60520
Pathways:	Activation of Innate immune Response , Carbohydrate Homeostasis , Chromatin Binding , Regulation of Lipid Metabolism by PPARalpha

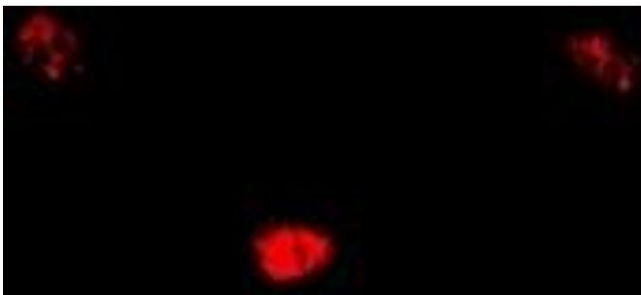
Application Details

Application Notes:	WB (1:500 - 1:2000), IF/IC (1:50 - 1:200), IP (1:50 - 1:200), ChIP (1:20 - 1:100)
Restrictions:	For Research Use only

Handling

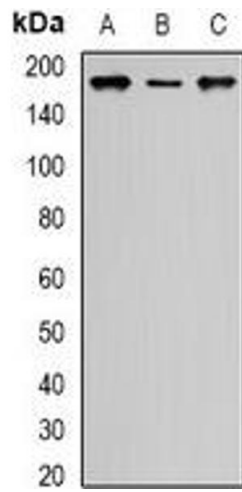
Format:	Liquid
Buffer:	Liquid in 0.42 % Potassium phosphate, 0.87 % Sodium chloride, pH 7.3, 30 % glycerol, and 0.01 % sodium azide.
Preservative:	Sodium azide
Precaution of Use:	This product contains Sodium azide: a POISONOUS AND HAZARDOUS SUBSTANCE which should be handled by trained staff only.
Storage:	-20 °C
Storage Comment:	Shipped at 4°C. Upon delivery aliquot and store at -20°C for one year. Avoid freeze/thaw cycles.
Expiry Date:	12 months

Images



Immunofluorescence

Image 1. Immunofluorescent analysis of SIN3A staining in U2OS cells. Formalin-fixed cells were permeabilized with 0.1% Triton X-100 in TBS for 5-10 minutes and blocked with 3% BSA-PBS for 30 minutes at room temperature. Cells were probed with the primary antibody



Western Blotting

Image 2. Western blot analysis of SIN3A expression in HeLa (A), MCF7 (B), COS7 (C) whole cell lysates.