



[Go to Product page](#)

Datasheet for ABIN730603

## anti-Butyrylcholinesterase antibody (AA 505-602)

### 2 Images

#### Overview

Quantity:	100 µL
Target:	Butyrylcholinesterase (BCHE)
Binding Specificity:	AA 505-602
Reactivity:	Human
Host:	Rabbit
Clonality:	Polyclonal
Conjugate:	This Butyrylcholinesterase antibody is un-conjugated
Application:	Western Blotting (WB), ELISA, Immunofluorescence (Paraffin-embedded Sections) (IF (p)), Immunohistochemistry (Paraffin-embedded Sections) (IHC (p)), Immunofluorescence (Cultured Cells) (IF (cc)), Immunohistochemistry (Frozen Sections) (IHC (fro))

#### Product Details

Immunogen:	KLH conjugated synthetic peptide derived from human BCHE
Isotype:	IgG
Cross-Reactivity:	Human
Predicted Reactivity:	Mouse,Rat,Dog,Pig,Horse,Chicken,Rabbit
Purification:	Purified by Protein A.

#### Target Details

Target:	Butyrylcholinesterase (BCHE)
---------	------------------------------

## Target Details

---

Alternative Name:	BCHE ( <a href="#">BCHE Products</a> )
Background:	Synonyms: E1, CHE1, CHE2, Cholinesterase, Acylcholine acylhydrolase, Butyrylcholine esterase, Choline esterase II, Pseudocholinesterase, BCHE Background: Esterase with broad substrate specificity. Contributes to the inactivation of the neurotransmitter acetylcholine. Can degrade neurotoxic organophosphate esters.
Gene ID:	590
UniProt:	<a href="#">P06276</a>
Pathways:	<a href="#">Peptide Hormone Metabolism</a>

## Application Details

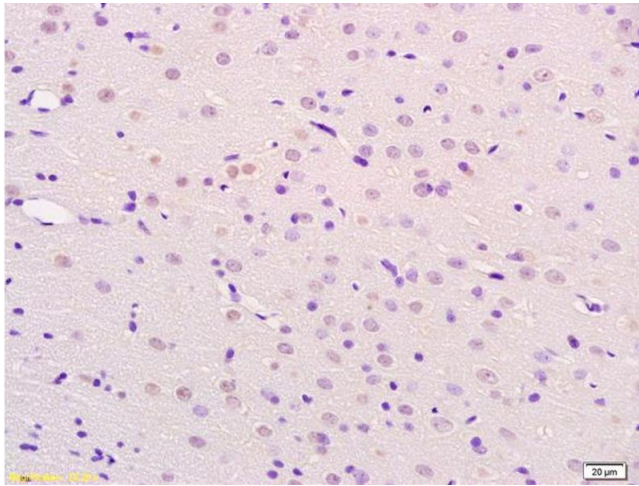
---

Application Notes:	WB 1:300-5000 ELISA 1:500-1000 IHC-P 1:200-400 IHC-F 1:100-500 IF(IHC-P) 1:50-200 IF(IHC-F) 1:50-200 IF(ICC) 1:50-200
Restrictions:	For Research Use only

## Handling

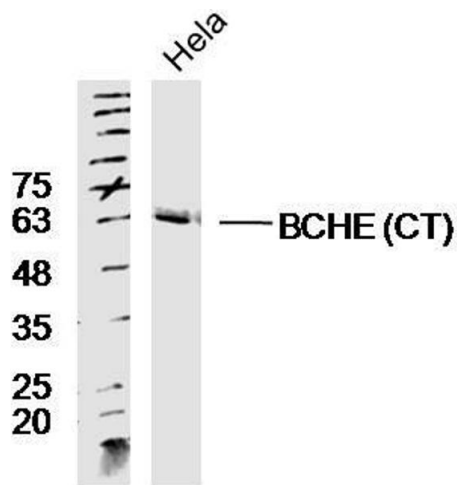
---

Format:	Liquid
Concentration:	1 µg/µL
Buffer:	0.01M TBS( pH 7.4) with 1 % BSA, 0.02 % Proclin300 and 50 % Glycerol.
Preservative:	ProClin
Precaution of Use:	This product contains ProClin: a POISONOUS AND HAZARDOUS SUBSTANCE, which should be handled by trained staff only.
Storage:	4 °C,-20 °C
Storage Comment:	Shipped at 4°C. Store at -20°C for one year. Avoid repeated freeze/thaw cycles.
Expiry Date:	12 months



### Immunohistochemistry

**Image 1.** Formalin-fixed and paraffin embedded rat brain labeled with Anti-BCHE Polyclonal Antibody, Unconjugated (ABIN730603) at 1:200 followed by conjugation to the secondary antibody and DAB staining.



### Western Blotting

**Image 2.** Lane 1: HeLa lysates probed with Rabbit Anti-BCHE Polyclonal Antibody, Unconjugated at 1:300 overnight at 4°C. Followed by a conjugated secondary antibody at 1:10000 for 90 min at 37°C.