

Datasheet for ABIN7306054

**anti-GPX4 antibody****3** Images[Go to Product page](#)

## Overview

|              |  |
|--------------|--|
| Quantity:    | 100 µL   |
| Target:      | GPX4   |
| Reactivity:  | Human, Mouse, Rat  |
| Host:        | Rabbit   |
| Clonality:   | Polyclonal   |
| Conjugate:   | This GPX4 antibody is un-conjugated  |
| Application: | Western Blotting (WB), Immunohistochemistry (IHC), Immunofluorescence (IF),<br>Immunochromatography (IC) |

## Product Details

|                  |   |
|------------------|---|
| Immunogen:       | Recombinant full length protein of human GPx-4                  |
| Specificity:     | Recognizes endogenous levels of GPx-4 protein.                  |
| Characteristics: | Rabbit polyclonal antibody to GPx-4                             |
| Purification:    | The antibody was purified by immunogen affinity chromatography. |

## Target Details

|                   |   |
|-------------------|---|
| Target:           | GPX4  |
| Alternative Name: | GPx-4 ( <a href="#">GPX4 Products</a> )   |
| Background:       | Phospholipid hydroperoxide glutathione peroxidase, mitochondrial, PHGPx, Glutathione peroxidase 4, GPx-4, GSHPx-4 |

## Target Details

Gene ID: 2879

UniProt: [P36969](#)

## Application Details

Application Notes: WB (1:500 - 1:2000), IH (1:50 - 1:200), IF/IC (1:10 - 1:100)

Restrictions: For Research Use only

## Handling

Format: Liquid

Buffer: Liquid in 0.42 % Potassium phosphate, 0.87 % Sodium chloride, pH 7.3, 30 % glycerol, and 0.01 % sodium azide.

Preservative: Sodium azide

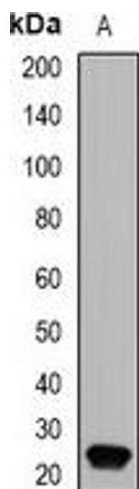
Precaution of Use: This product contains Sodium azide: a POISONOUS AND HAZARDOUS SUBSTANCE which should be handled by trained staff only.

Storage: -20 °C

Storage Comment: Shipped at 4°C. Upon delivery aliquot and store at -20°C for one year. Avoid freeze/thaw cycles.

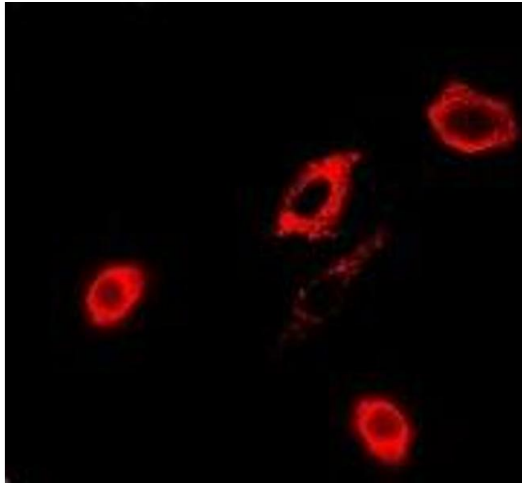
Expiry Date: 12 months

## Images



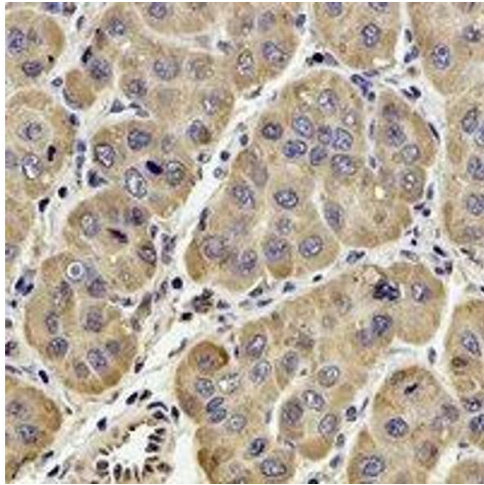
### Western Blotting

**Image 1.** Western blot analysis of GPx-4 expression in mouse kidney (A) whole cell lysates.



#### Immunofluorescence

**Image 2.** Immunofluorescent analysis of GPx-4 staining in A549 cells. Formalin-fixed cells were permeabilized with 0.1% Triton X-100 in TBS for 5-10 minutes and blocked with 3% BSA-PBS for 30 minutes at room temperature. Cells were probed with the primary antibody



#### Immunohistochemistry

**Image 3.** Immunohistochemical analysis of GPx-4 staining in human liver cancer formalin fixed paraffin embedded tissue section. The section was pre-treated using heat mediated antigen retrieval with sodium citrate buffer (pH 6.0). The section was then incubated with