

Datasheet for ABIN7306072

anti-PSMC2 antibody**3** Images[Go to Product page](#)

Overview

Quantity:	100 µL
Target:	PSMC2
Reactivity:	Human, Mouse, Rat
Host:	Rabbit
Clonality:	Polyclonal
Conjugate:	This PSMC2 antibody is un-conjugated
Application:	Western Blotting (WB), Immunohistochemistry (IHC), Immunofluorescence (IF), Immunochromatography (IC)

Product Details

Immunogen:	Recombinant full length protein of human PSMC2
Specificity:	Recognizes endogenous levels of PSMC2 protein.
Characteristics:	Rabbit polyclonal antibody to PSMC2
Purification:	The antibody was purified by immunogen affinity chromatography.

Target Details

Target:	PSMC2
Alternative Name:	PSMC2 (PSMC2 Products)
Background:	MSS1, 26S protease regulatory subunit 7, 26S proteasome AAA-ATPase subunit RPT1, Proteasome 26S subunit ATPase 2, Protein MSS1

Target Details

Gene ID:	5701, 25581
UniProt:	P35998 , P46471 , Q63347
Pathways:	Mitotic G1-G1/S Phases , DNA Replication , Synthesis of DNA , Ubiquitin Proteasome Pathway

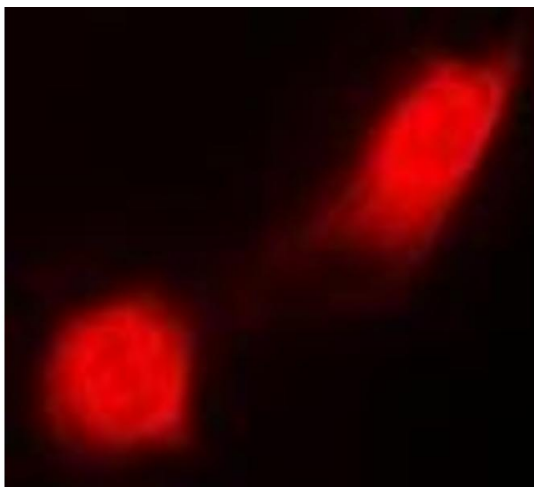
Application Details

Application Notes:	WB (1:500 - 1:2000), IH (1:50 - 1:200), IF/IC (1:50 - 1:200)
Restrictions:	For Research Use only

Handling

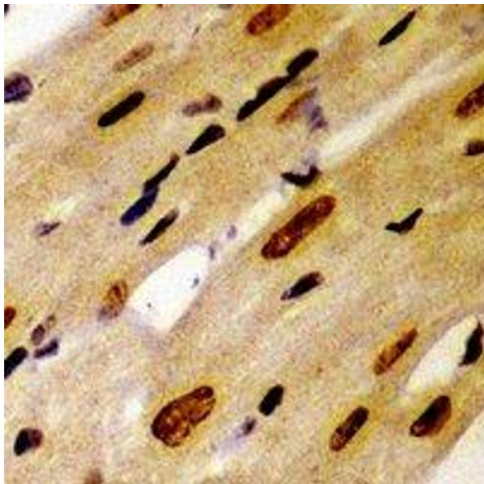
Format:	Liquid
Buffer:	Liquid in 0.42 % Potassium phosphate, 0.87 % Sodium chloride, pH 7.3, 30 % glycerol, and 0.01 % sodium azide.
Preservative:	Sodium azide
Precaution of Use:	This product contains Sodium azide: a POISONOUS AND HAZARDOUS SUBSTANCE which should be handled by trained staff only.
Storage:	-20 °C
Storage Comment:	Shipped at 4°C. Upon delivery aliquot and store at -20°C for one year. Avoid freeze/thaw cycles.
Expiry Date:	12 months

Images



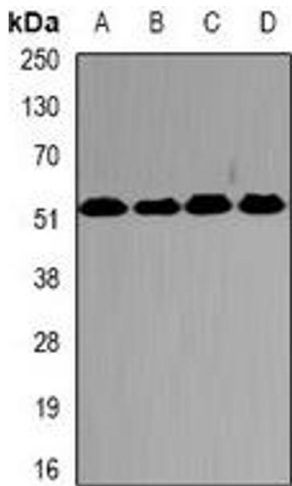
Immunofluorescence

Image 1. Immunofluorescent analysis of PSMC2 staining in MCF7 cells. Formalin-fixed cells were permeabilized with 0.1% Triton X-100 in TBS for 5-10 minutes and blocked with 3% BSA-PBS for 30 minutes at room temperature. Cells were probed with the primary antibody



Immunohistochemistry

Image 2. Immunohistochemical analysis of PSMC2 staining in mouse heart formalin fixed paraffin embedded tissue section. The section was pre-treated using heat mediated antigen retrieval with sodium citrate buffer (pH 6.0). The section was then incubated with the a



Western Blotting

Image 3. Western blot analysis of PSMC2 expression in HepG2 (A), SW620 (B), mouse testis (C), mouse brain (D) whole cell lysates.