

Datasheet for ABIN7306084
anti-TPSAB1 antibody



[Go to Product page](#)

2 Images

Overview

Quantity:	100 µL
Target:	TPSAB1
Reactivity:	Human, Mouse, Rat
Host:	Rabbit
Clonality:	Polyclonal
Conjugate:	This TPSAB1 antibody is un-conjugated
Application:	Western Blotting (WB), Immunofluorescence (IF), Immunochromatography (IC)

Product Details

Immunogen:	Recombinant full length protein of human Tryptase alpha/beta
Specificity:	Recognizes endogenous levels of Tryptase alpha/beta protein.
Characteristics:	Rabbit polyclonal antibody to Tryptase alpha/beta
Purification:	The antibody was purified by immunogen affinity chromatography.

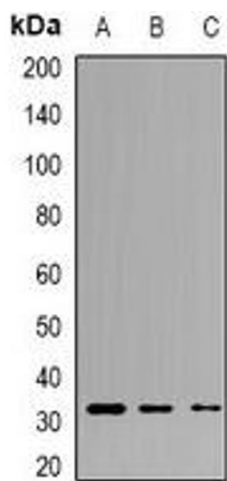
Target Details

Target:	TPSAB1
Alternative Name:	Tryptase alpha/beta (TPSAB1 Products)
Background:	TPS1, TPS2, TPSB1, Tryptase alpha/beta-1, Tryptase-1, Tryptase I, Tryptase alpha-1
Gene ID:	7177, 100503895, 54271
UniProt:	Q15661 , Q02844 , P27435

Application Details

Application Notes:	WB (1:500 - 1:2000), IF/IC (1:50 - 1:200)
Restrictions:	For Research Use only
Handling	
Format:	Liquid
Buffer:	Liquid in 0.42 % Potassium phosphate, 0.87 % Sodium chloride, pH 7.3, 30 % glycerol, and 0.01 % sodium azide.
Preservative:	Sodium azide
Precaution of Use:	This product contains Sodium azide: a POISONOUS AND HAZARDOUS SUBSTANCE which should be handled by trained staff only.
Storage:	-20 °C
Storage Comment:	Shipped at 4°C. Upon delivery aliquot and store at -20°C for one year. Avoid freeze/thaw cycles.
Expiry Date:	12 months

Images



Western Blotting

Image 1. Western blot analysis of Tryptase alpha/beta expression in HepG2 (A), mouse brain (B), mouse liver (C) whole cell lysates.



Immunofluorescence

Image 2. Immunofluorescent analysis of Tryptase alpha/beta staining in Hela cells. Formalin-fixed cells were permeabilized with 0.1% Triton X-100 in TBS for 5-10 minutes and blocked with 3% BSA-PBS for 30 minutes at room temperature. Cells were probed with the pri