



[Go to Product page](#)

Datasheet for ABIN7306086

anti-WDR5 antibody

3 Images

Overview

Quantity:	100 µL
Target:	WDR5
Reactivity:	Human, Mouse, Rat
Host:	Rabbit
Clonality:	Polyclonal
Conjugate:	This WDR5 antibody is un-conjugated
Application:	Western Blotting (WB), Immunohistochemistry (IHC), Immunofluorescence (IF), Immunochromatography (IC)

Product Details

Immunogen:	Recombinant full length protein of human WDR5
Specificity:	Recognizes endogenous levels of WDR5 protein.
Characteristics:	Rabbit polyclonal antibody to WDR5
Purification:	The antibody was purified by immunogen affinity chromatography.

Target Details

Target:	WDR5
Alternative Name:	WDR5 (WDR5 Products)
Background:	BIG3, WD repeat-containing protein 5, BMP2-induced 3-kb gene protein
Gene ID:	11091, 140858, 362093

Target Details

UniProt: [P61964](#), [P61965](#), [Q498M4](#)

Application Details

Application Notes: WB (1:500 - 1:2000), IH (1:50 - 1:200), IF/IC (1:10 - 1:100)

Restrictions: For Research Use only

Handling

Format: Liquid

Buffer: Liquid in 0.42 % Potassium phosphate, 0.87 % Sodium chloride, pH 7.3, 30 % glycerol, and 0.01 % sodium azide.

Preservative: Sodium azide

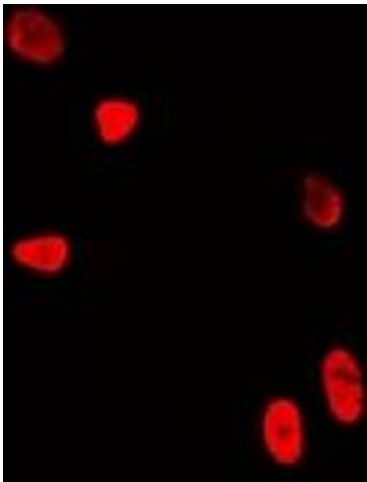
Precaution of Use: This product contains Sodium azide: a POISONOUS AND HAZARDOUS SUBSTANCE which should be handled by trained staff only.

Storage: -20 °C

Storage Comment: Shipped at 4°C. Upon delivery aliquot and store at -20°C for one year. Avoid freeze/thaw cycles.

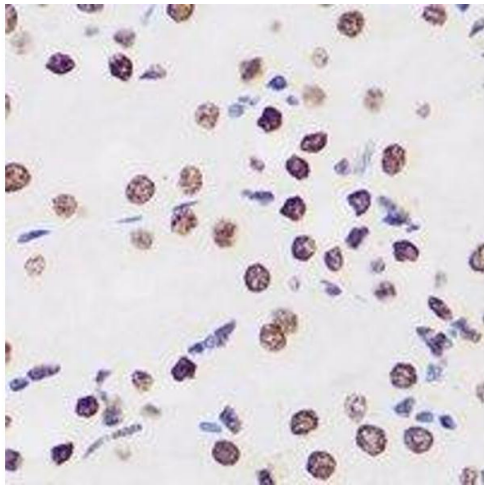
Expiry Date: 12 months

Images



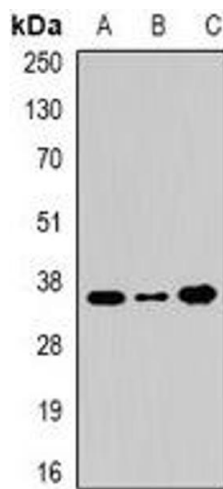
Immunofluorescence

Image 1. Immunofluorescent analysis of WDR5 staining in U2OS cells. Formalin-fixed cells were permeabilized with 0.1% Triton X-100 in TBS for 5-10 minutes and blocked with 3% BSA-PBS for 30 minutes at room temperature. Cells were probed with the primary antibody i



Immunohistochemistry

Image 2. Immunohistochemical analysis of WDR5 staining in human kidney formalin fixed paraffin embedded tissue section. The section was pre-treated using heat mediated antigen retrieval with sodium citrate buffer (pH 6.0). The section was then incubated with the a



Western Blotting

Image 3. Western blot analysis of WDR5 expression in 22RV1 (A), BT474 (B), HeLa (C) whole cell lysates.