

Datasheet for ABIN7306102

**anti-PPP4C antibody****3** Images[Go to Product page](#)

## Overview

Quantity:	100 µL
Target:	PPP4C
Reactivity:	Human, Mouse, Rat
Host:	Rabbit
Clonality:	Polyclonal
Conjugate:	This PPP4C antibody is un-conjugated
Application:	Western Blotting (WB), Immunohistochemistry (IHC), Immunofluorescence (IF), Immunochromatography (IC)

## Product Details

Immunogen:	Recombinant full length protein of human PPX
Specificity:	Recognizes endogenous levels of PPX protein.
Characteristics:	Rabbit polyclonal antibody to PPX
Purification:	The antibody was purified by immunogen affinity chromatography.

## Target Details

Target:	PPP4C
Alternative Name:	PPX ( <a href="#">PPP4C Products</a> )
Background:	PPP4, PPX, Serine/threonine-protein phosphatase 4 catalytic subunit, PP4C, Pp4, Protein phosphatase X, PP-X

### Target Details

Gene ID:	5531, 56420, 171366
UniProt:	<a href="#">P60510</a> , <a href="#">P97470</a> , <a href="#">Q5BJ92</a>

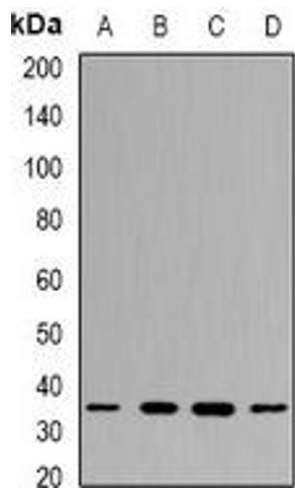
### Application Details

Application Notes:	WB (1:500 - 1:2000), IH (1:50 - 1:200), IF/IC (1:50 - 1:200)
Restrictions:	For Research Use only

### Handling

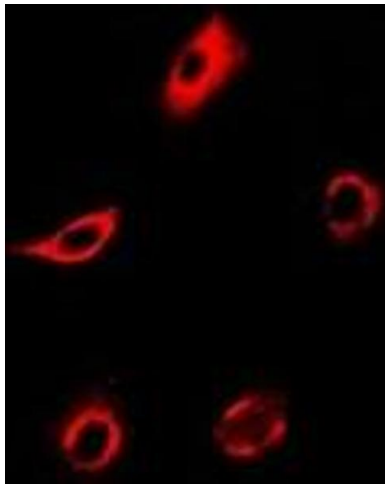
Format:	Liquid
Buffer:	Liquid in 0.42 % Potassium phosphate, 0.87 % Sodium chloride, pH 7.3, 30 % glycerol, and 0.01 % sodium azide.
Preservative:	Sodium azide
Precaution of Use:	This product contains Sodium azide: a POISONOUS AND HAZARDOUS SUBSTANCE which should be handled by trained staff only.
Storage:	-20 °C
Storage Comment:	Shipped at 4°C. Upon delivery aliquot and store at -20°C for one year. Avoid freeze/thaw cycles.
Expiry Date:	12 months

### Images



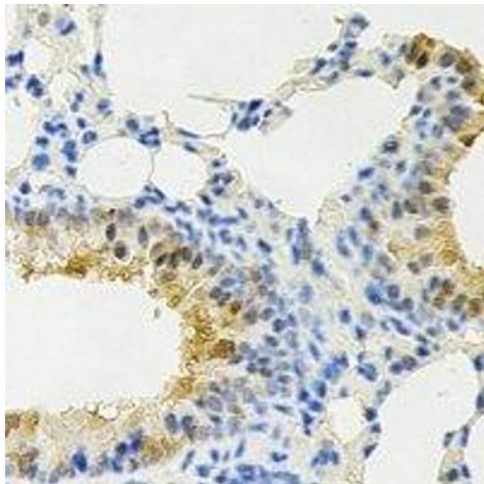
#### Western Blotting

**Image 1.** Western blot analysis of PPX expression in MCF7 (A), NIH3T3 (B), mouse testis (C), mouse spleen (D) whole cell lysates.



#### Immunofluorescence

**Image 2.** Immunofluorescent analysis of PPX staining in MCF7 cells. Formalin-fixed cells were permeabilized with 0.1% Triton X-100 in TBS for 5-10 minutes and blocked with 3% BSA-PBS for 30 minutes at room temperature. Cells were probed with the primary antibody in



#### Immunohistochemistry

**Image 3.** Immunohistochemical analysis of PPX staining in rat lung formalin fixed paraffin embedded tissue section. The section was pre-treated using heat mediated antigen retrieval with sodium citrate buffer (pH 6.0). The section was then incubated with the antibo