

Datasheet for ABIN7306104

anti-SORD antibody

2 Images

[Go to Product page](#)

Overview

Quantity:	100 µL
Target:	SORD
Reactivity:	Human, Mouse, Rat
Host:	Rabbit
Clonality:	Polyclonal
Conjugate:	This SORD antibody is un-conjugated
Application:	Western Blotting (WB), Immunofluorescence (IF), Immunochromatography (IC)

Product Details

Immunogen:	Recombinant full length protein of human Sorbitol Dehydrogenase
Specificity:	Recognizes endogenous levels of Sorbitol Dehydrogenase protein.
Characteristics:	Rabbit polyclonal antibody to Sorbitol Dehydrogenase
Purification:	The antibody was purified by immunogen affinity chromatography.

Target Details

Target:	SORD
Alternative Name:	Sorbitol Dehydrogenase (SORD Products)
Background:	Sorbitol dehydrogenase, L-iditol 2-dehydrogenase
Gene ID:	6652, 20322, 24788
UniProt:	Q00796 , Q64442 , P27867

Application Details

Application Notes:	WB (1:500 - 1:2000), IF/IC (1:50 - 1:200)
Restrictions:	For Research Use only

Handling

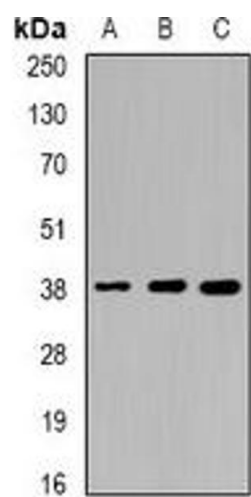
Format:	Liquid
Buffer:	Liquid in 0.42 % Potassium phosphate, 0.87 % Sodium chloride, pH 7.3, 30 % glycerol, and 0.01 % sodium azide.
Preservative:	Sodium azide
Precaution of Use:	This product contains Sodium azide: a POISONOUS AND HAZARDOUS SUBSTANCE which should be handled by trained staff only.
Storage:	-20 °C
Storage Comment:	Shipped at 4°C. Upon delivery aliquot and store at -20°C for one year. Avoid freeze/thaw cycles.
Expiry Date:	12 months

Images



Immunofluorescence

Image 1. Immunofluorescent analysis of Sorbitol Dehydrogenase staining in MCF7 cells. Formalin-fixed cells were permeabilized with 0.1% Triton X-100 in TBS for 5-10 minutes and blocked with 3% BSA-PBS for 30 minutes at room temperature. Cells were probed with the



Western Blotting

Image 2. Western blot analysis of Sorbitol Dehydrogenase expression in HT29 (A), mouse liver (B), mouse kidney (C) whole cell lysates.