

Datasheet for ABIN7306108

anti-LETMD1 antibody**3** Images[Go to Product page](#)

Overview

Quantity:	100 µL
Target:	LETMD1
Reactivity:	Human, Mouse, Rat
Host:	Rabbit
Clonality:	Polyclonal
Conjugate:	This LETMD1 antibody is un-conjugated
Application:	Western Blotting (WB), Immunohistochemistry (IHC), Immunofluorescence (IF), Immunochromatography (IC)

Product Details

Immunogen:	Recombinant full length protein of human HCCR-1
Specificity:	Recognizes endogenous levels of HCCR-1 protein.
Characteristics:	Rabbit polyclonal antibody to HCCR-1
Purification:	The antibody was purified by immunogen affinity chromatography.

Target Details

Target:	LETMD1
Alternative Name:	HCCR-1 (LETMD1 Products)
Background:	LETM1 domain-containing protein 1, Cervical cancer 1 proto-oncogene protein p40, Cervical cancer proto-oncogene 2 protein, HCCR-1, HCRR-2

Target Details

Gene ID:	25875, 68614
UniProt:	Q6P1Q0 , Q924L1

Application Details

Application Notes:	WB (1:500 - 1:2000), IH (1:50 - 1:200), IF/IC (1:50 - 1:200)
Restrictions:	For Research Use only

Handling

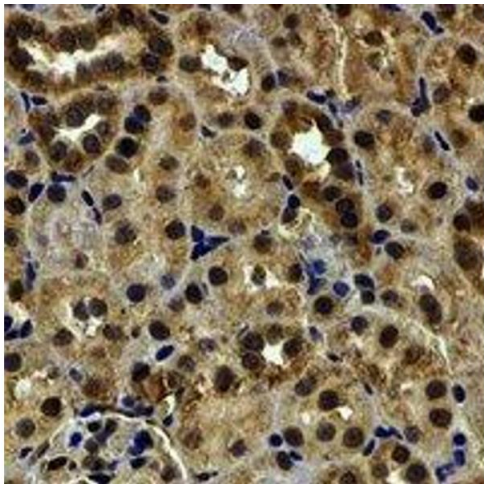
Format:	Liquid
Buffer:	Liquid in 0.42 % Potassium phosphate, 0.87 % Sodium chloride, pH 7.3, 30 % glycerol, and 0.01 % sodium azide.
Preservative:	Sodium azide
Precaution of Use:	This product contains Sodium azide: a POISONOUS AND HAZARDOUS SUBSTANCE which should be handled by trained staff only.
Storage:	-20 °C
Storage Comment:	Shipped at 4°C. Upon delivery aliquot and store at -20°C for one year. Avoid freeze/thaw cycles.
Expiry Date:	12 months

Images



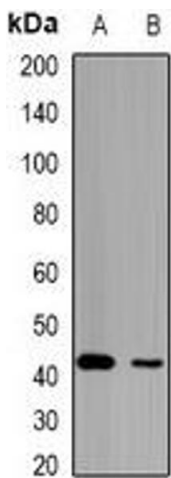
Immunofluorescence

Image 1. Immunofluorescent analysis of HCCR-1 staining in MCF7 cells. Formalin-fixed cells were permeabilized with 0.1% Triton X-100 in TBS for 5-10 minutes and blocked with 3% BSA-PBS for 30 minutes at room temperature. Cells were probed with the primary antibody



Immunohistochemistry

Image 2. Immunohistochemical analysis of HCCR-1 staining in human kidney formalin fixed paraffin embedded tissue section. The section was pre-treated using heat mediated antigen retrieval with sodium citrate buffer (pH 6.0). The section was then incubated with the



Western Blotting

Image 3. Western blot analysis of HCCR-1 expression in mouse kidney (A), mouse liver (B) whole cell lysates.