

Datasheet for ABIN7306114

anti-PIWIL1 antibody**2** Images[Go to Product page](#)

Overview

Quantity:	100 µL
Target:	PIWIL1
Reactivity:	Human, Mouse, Rat
Host:	Rabbit
Clonality:	Polyclonal
Conjugate:	This PIWIL1 antibody is un-conjugated
Application:	Western Blotting (WB), Immunofluorescence (IF), Immunoprecipitation (IP), Immunochromatography (IC)

Product Details

Immunogen:	Recombinant full length protein of human HIWI1
Specificity:	Recognizes endogenous levels of HIWI1 protein.
Characteristics:	Rabbit polyclonal antibody to HIWI1
Purification:	The antibody was purified by immunogen affinity chromatography.

Target Details

Target:	PIWIL1
Alternative Name:	HIWI1 (PIWIL1 Products)
Background:	HIWI, Piwi-like protein 1
Gene ID:	9271, 57749

Target Details

UniProt: [Q96J94](#), [Q9JMB7](#)

Application Details

Application Notes: WB (1:500 - 1:2000), IF/IC (1:20 - 1:100), IP (1:20 - 1:100)

Restrictions: For Research Use only

Handling

Format: Liquid

Buffer: Liquid in 0.42 % Potassium phosphate, 0.87 % Sodium chloride, pH 7.3, 30 % glycerol, and 0.01 % sodium azide.

Preservative: Sodium azide

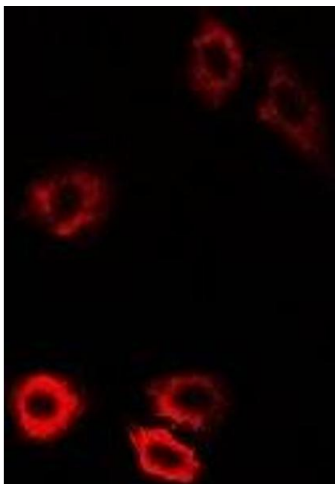
Precaution of Use: This product contains Sodium azide: a POISONOUS AND HAZARDOUS SUBSTANCE which should be handled by trained staff only.

Storage: -20 °C

Storage Comment: Shipped at 4°C. Upon delivery aliquot and store at -20°C for one year. Avoid freeze/thaw cycles.

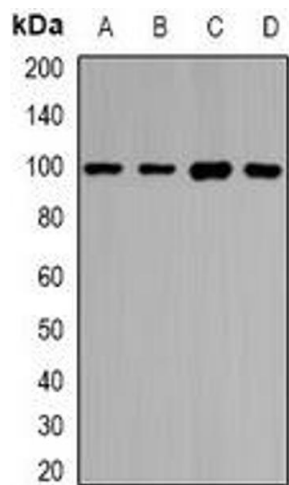
Expiry Date: 12 months

Images



Immunofluorescence

Image 1. Immunofluorescent analysis of HIWI1 staining in U2OS cells. Formalin-fixed cells were permeabilized with 0.1% Triton X-100 in TBS for 5-10 minutes and blocked with 3% BSA-PBS for 30 minutes at room temperature. Cells were probed with the primary antibody



Western Blotting

Image 2. Western blot analysis of HIWI1 expression in HepG2 (A), SKOV3 (B), mouse testis (C), rat testis (D) whole cell lysates.