

Datasheet for ABIN7306124

anti-PSMA6 antibody

3 Images

[Go to Product page](#)

Overview

Quantity:	100 µL
Target:	PSMA6
Reactivity:	Human, Mouse, Rat
Host:	Rabbit
Clonality:	Polyclonal
Conjugate:	This PSMA6 antibody is un-conjugated
Application:	Western Blotting (WB), Immunohistochemistry (IHC), Immunofluorescence (IF), Immunochromatography (IC)

Product Details

Immunogen:	Recombinant full length protein of human PSMA6
Specificity:	Recognizes endogenous levels of PSMA6 protein.
Characteristics:	Rabbit polyclonal antibody to PSMA6
Purification:	The antibody was purified by immunogen affinity chromatography.

Target Details

Target:	PSMA6
Alternative Name:	PSMA6 (PSMA6 Products)
Background:	PROS27, Proteasome subunit alpha type-6, 27 kDa prosomal protein, PROS-27, p27K, Macropain iota chain, Multicatalytic endopeptidase complex iota chain, Proteasome iota chain

Target Details

Gene ID:	5687, 26443, 29673
UniProt:	P60900 , Q9QUM9 , P60901
Pathways:	Mitotic G1-G1/S Phases , DNA Replication , Synthesis of DNA

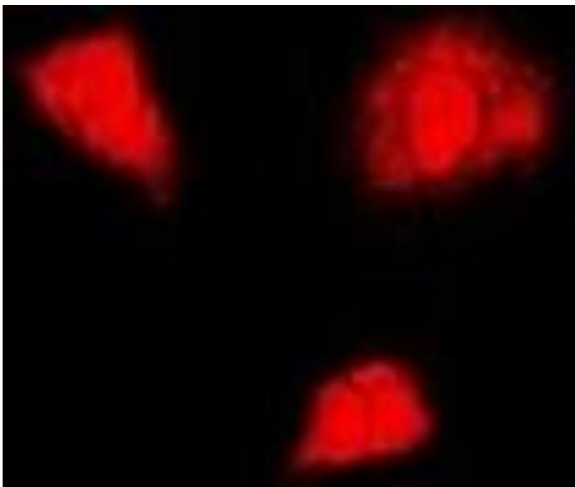
Application Details

Application Notes:	WB (1:500 - 1:2000), IH (1:50 - 1:200), IF/IC (1:50 - 1:200)
Restrictions:	For Research Use only

Handling

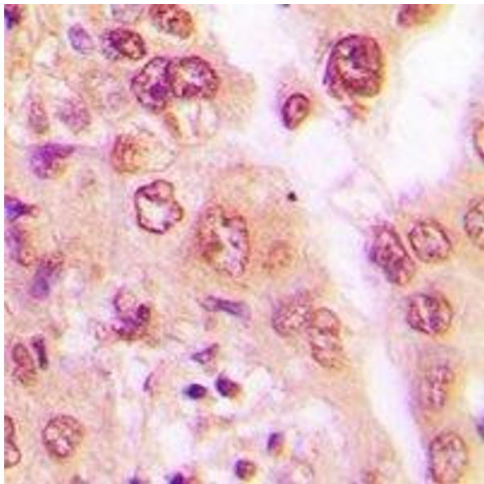
Format:	Liquid
Buffer:	Liquid in 0.42 % Potassium phosphate, 0.87 % Sodium chloride, pH 7.3, 30 % glycerol, and 0.01 % sodium azide.
Preservative:	Sodium azide
Precaution of Use:	This product contains Sodium azide: a POISONOUS AND HAZARDOUS SUBSTANCE which should be handled by trained staff only.
Storage:	-20 °C
Storage Comment:	Shipped at 4°C. Upon delivery aliquot and store at -20°C for one year. Avoid freeze/thaw cycles.
Expiry Date:	12 months

Images



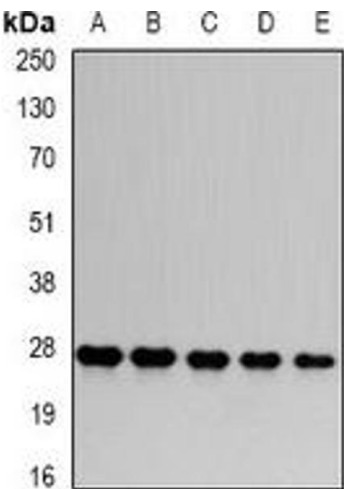
Immunofluorescence

Image 1. Immunofluorescent analysis of PSMA6 staining in U2OS cells. Formalin-fixed cells were permeabilized with 0.1% Triton X-100 in TBS for 5-10 minutes and blocked with 3% BSA-PBS for 30 minutes at room temperature. Cells were probed with the primary antibody



Immunohistochemistry

Image 2. Immunohistochemical analysis of PSMA6 staining in human lung cancer formalin fixed paraffin embedded tissue section. The section was pre-treated using heat mediated antigen retrieval with sodium citrate buffer (pH 6.0). The section was then incubated with



Western Blotting

Image 3. Western blot analysis of PSMA6 expression in HepG2 (A), Hela (B), mouse skeletal muscle (C), PC12 (D), COS7 (E) whole cell lysates.