

Datasheet for ABIN7306156

anti-TPI1 antibody

2 Images



[Go to Product page](#)

Overview

Quantity:	100 µL
Target:	TPI1
Reactivity:	Human, Mouse, Rat
Host:	Rabbit
Clonality:	Polyclonal
Conjugate:	This TPI1 antibody is un-conjugated
Application:	Western Blotting (WB), Immunofluorescence (IF), Immunochromatography (IC)

Product Details

Immunogen:	Recombinant full length protein of human TIM
Specificity:	Recognizes endogenous levels of TIM protein.
Characteristics:	Rabbit polyclonal antibody to TIM
Purification:	The antibody was purified by immunogen affinity chromatography.

Target Details

Target:	TPI1
Alternative Name:	TIM (TPI1 Products)
Background:	TPI, Triosephosphate isomerase, TIM, Triose-phosphate isomerase
Gene ID:	7167, 21991, 24849
UniProt:	P60174 , P17751 , P48500

Target Details

Pathways: [Cell RedoxHomeostasis](#)

Application Details

Application Notes: WB (1:500 - 1:2000), IF/IC (1:50 - 1:200)

Restrictions: For Research Use only

Handling

Format: Liquid

Buffer: Liquid in 0.42 % Potassium phosphate, 0.87 % Sodium chloride, pH 7.3, 30 % glycerol, and 0.01 % sodium azide.

Preservative: Sodium azide

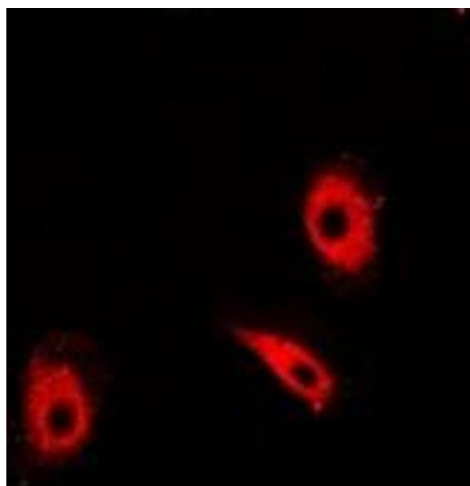
Precaution of Use: This product contains Sodium azide: a POISONOUS AND HAZARDOUS SUBSTANCE which should be handled by trained staff only.

Storage: -20 °C

Storage Comment: Shipped at 4°C. Upon delivery aliquot and store at -20°C for one year. Avoid freeze/thaw cycles.

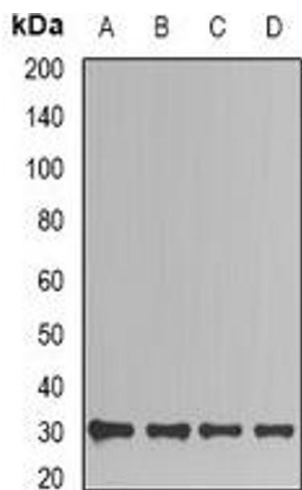
Expiry Date: 12 months

Images



Immunofluorescence

Image 1. Immunofluorescent analysis of TIM staining in HeLa cells. Formalin-fixed cells were permeabilized with 0.1% Triton X-100 in TBS for 5-10 minutes and blocked with 3% BSA-PBS for 30 minutes at room temperature. Cells were probed with the primary antibody in



Western Blotting

Image 2. Western blot analysis of TIM expression in Jurkat (A), HepG2 (B), mouse kidney (C), mouse brain (D) whole cell lysates.