



[Go to Product page](#)

Datasheet for ABIN7306168

anti-CPT2 antibody

3 Images

Overview

Quantity:	100 µL
Target:	CPT2
Reactivity:	Human, Mouse, Rat
Host:	Rabbit
Clonality:	Polyclonal
Conjugate:	This CPT2 antibody is un-conjugated
Application:	Western Blotting (WB), Immunohistochemistry (IHC), Immunofluorescence (IF), Immunochromatography (IC)

Product Details

Immunogen:	KLH-conjugated synthetic peptide of human CPT2
Specificity:	Recognizes endogenous levels of CPT2 protein.
Characteristics:	Rabbit polyclonal antibody to CPT2
Purification:	The antibody was purified by immunogen affinity chromatography.

Target Details

Target:	CPT2
Alternative Name:	CPT2 (CPT2 Products)
Background:	CPT1, Carnitine O-palmitoyltransferase 2, mitochondrial, Carnitine palmitoyltransferase II, CPT II

Target Details

Gene ID:	1376, 12896, 25413
UniProt:	P23786 , P52825 , P18886
Pathways:	Regulation of Lipid Metabolism by PPARalpha , Monocarboxylic Acid Catabolic Process

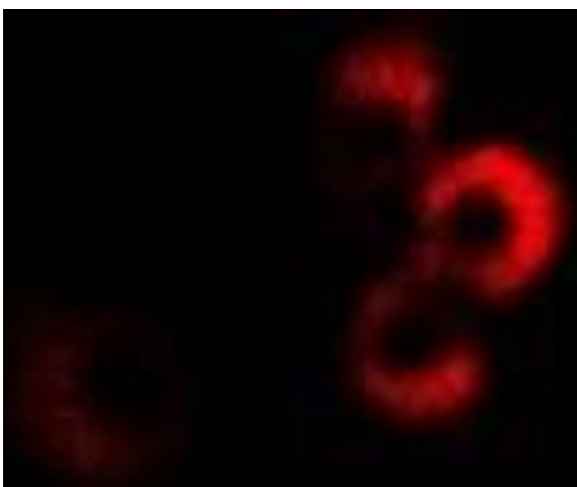
Application Details

Application Notes:	WB (1:500 - 1:2000), IH (1:50 - 1:100), IF/IC (1:50 - 1:100)
Restrictions:	For Research Use only

Handling

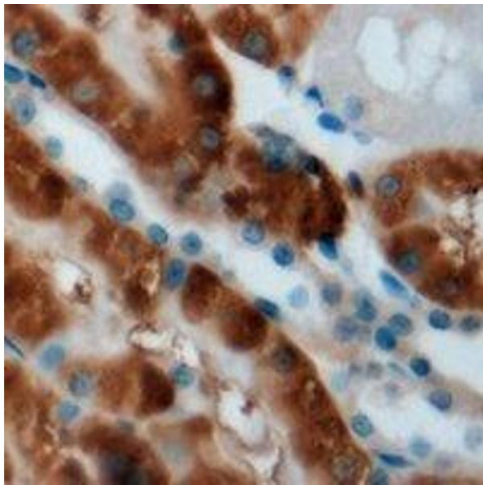
Format:	Liquid
Buffer:	Liquid in 0.42 % Potassium phosphate, 0.87 % Sodium chloride, pH 7.3, 30 % glycerol, and 0.01 % sodium azide.
Preservative:	Sodium azide
Precaution of Use:	This product contains Sodium azide: a POISONOUS AND HAZARDOUS SUBSTANCE which should be handled by trained staff only.
Storage:	-20 °C
Storage Comment:	Shipped at 4°C. Upon delivery aliquot and store at -20°C for one year. Avoid freeze/thaw cycles.
Expiry Date:	12 months

Images



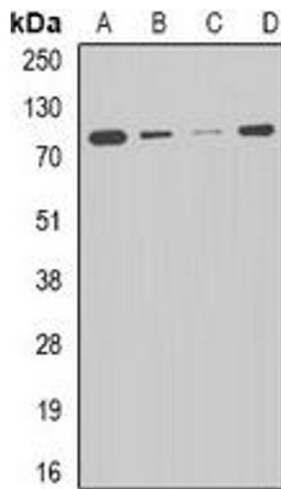
Immunofluorescence

Image 1. Immunofluorescent analysis of CPT2 staining in MCF7 cells. Formalin-fixed cells were permeabilized with 0.1% Triton X-100 in TBS for 5-10 minutes and blocked with 3% BSA-PBS for 30 minutes at room temperature. Cells were probed with the primary antibody i



Immunohistochemistry

Image 2. Immunohistochemical analysis of CPT2 staining in mouse kidney formalin fixed paraffin embedded tissue section. The section was pre-treated using heat mediated antigen retrieval with sodium citrate buffer (pH 6.0). The section was then incubated with the a



Western Blotting

Image 3. Western blot analysis of CPT2 expression in HepG2 (A), THP1 (B), mouse liver (C), mouse heart (D) whole cell lysates.