

Datasheet for ABIN7306194

anti-PIWIL4 antibody**3** Images[Go to Product page](#)

Overview

Quantity:	100 µL
Target:	PIWIL4
Reactivity:	Human, Mouse, Rat
Host:	Rabbit
Clonality:	Polyclonal
Conjugate:	This PIWIL4 antibody is un-conjugated
Application:	Western Blotting (WB), Immunohistochemistry (IHC), Immunofluorescence (IF), Immunochromatography (IC)

Product Details

Immunogen:	Recombinant full length protein of human HIWI2
Specificity:	Recognizes endogenous levels of HIWI2 protein.
Characteristics:	Rabbit polyclonal antibody to HIWI2
Purification:	The antibody was purified by immunogen affinity chromatography.

Target Details

Target:	PIWIL4
Alternative Name:	HIWI2 (PIWIL4 Products)
Background:	HIWI2, PIWI, Piwi-like protein 4
Gene ID:	143689, 330890

Target Details

UniProt: [Q7Z3Z4](#), [Q8CGT6](#), [Q4G033](#)

Application Details

Application Notes: WB (1:500 - 1:2000), IH (1:50 - 1:200), IF/IC (1:50 - 1:200)

Restrictions: For Research Use only

Handling

Format: Liquid

Buffer: Liquid in 0.42 % Potassium phosphate, 0.87 % Sodium chloride, pH 7.3, 30 % glycerol, and 0.01 % sodium azide.

Preservative: Sodium azide

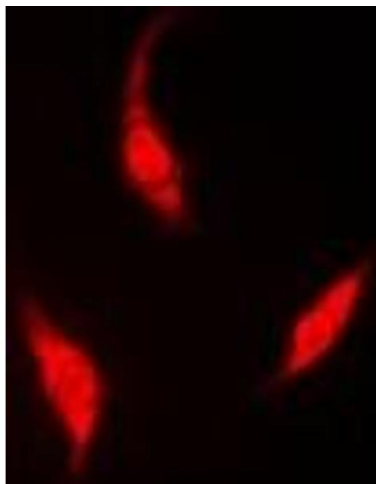
Precaution of Use: This product contains Sodium azide: a POISONOUS AND HAZARDOUS SUBSTANCE which should be handled by trained staff only.

Storage: -20 °C

Storage Comment: Shipped at 4°C. Upon delivery aliquot and store at -20°C for one year. Avoid freeze/thaw cycles.

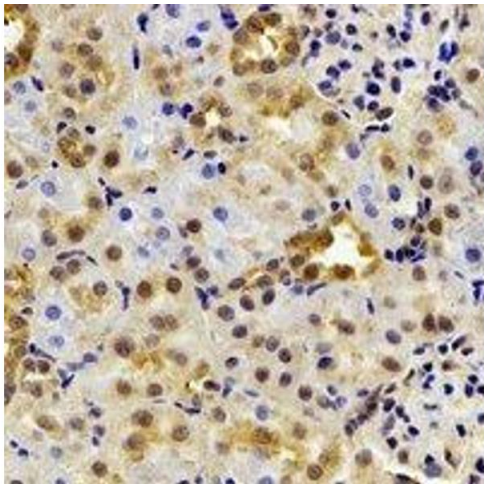
Expiry Date: 12 months

Images



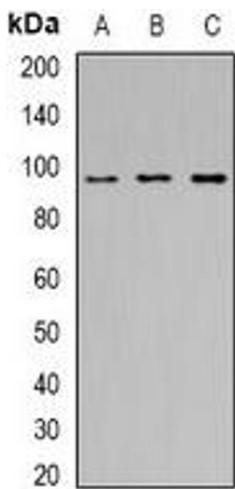
Immunofluorescence

Image 1. Immunofluorescent analysis of HIWI2 staining in A549 cells. Formalin-fixed cells were permeabilized with 0.1% Triton X-100 in TBS for 5-10 minutes and blocked with 3% BSA-PBS for 30 minutes at room temperature. Cells were probed with the primary antibody



Immunohistochemistry

Image 2. Immunohistochemical analysis of HIWI2 staining in rat kidney formalin fixed paraffin embedded tissue section. The section was pre-treated using heat mediated antigen retrieval with sodium citrate buffer (pH 6.0). The section was then incubated with the an



Western Blotting

Image 3. Western blot analysis of HIWI2 expression in K562 (A), MCF7 (B), Hela (C) whole cell lysates.