

Datasheet for ABIN7306234

anti-CPT1A antibody

2 Images



[Go to Product page](#)

Overview

Quantity:	100 µL
Target:	CPT1A
Reactivity:	Human, Mouse, Rat
Host:	Rabbit
Clonality:	Polyclonal
Conjugate:	This CPT1A antibody is un-conjugated
Application:	Western Blotting (WB), Immunofluorescence (IF), Immunochromatography (IC)

Product Details

Immunogen:	Recombinant full length protein of human CPT1A
Specificity:	Recognizes endogenous levels of CPT1A protein.
Characteristics:	Rabbit polyclonal antibody to CPT1A
Purification:	The antibody was purified by immunogen affinity chromatography.

Target Details

Target:	CPT1A
Alternative Name:	CPT1A (CPT1A Products)
Background:	CPT1, Carnitine O-palmitoyltransferase 1, liver isoform, CPT1-L, Carnitine O-palmitoyltransferase I, liver isoform, CPT I, CPTI-L, Carnitine palmitoyltransferase 1A
Gene ID:	1374, 12894, 25757

Target Details

UniProt:	P50416 , P97742 , P32198
Pathways:	AMPK Signaling , Regulation of Lipid Metabolism by PPARAlpha , Feeding Behaviour , Monocarboxylic Acid Catabolic Process

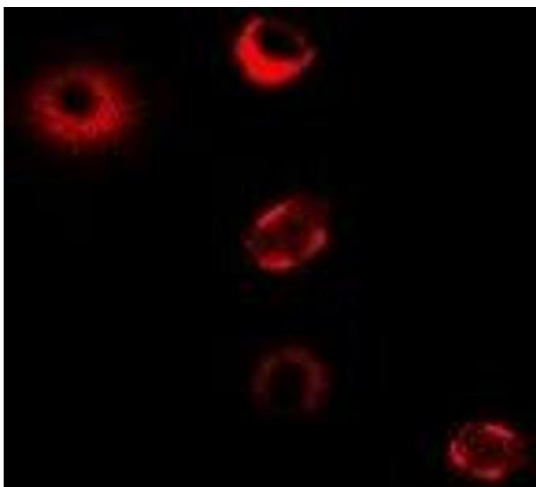
Application Details

Application Notes:	WB (1:500 - 1:2000), IF/IC (1:50 - 1:200)
Restrictions:	For Research Use only

Handling

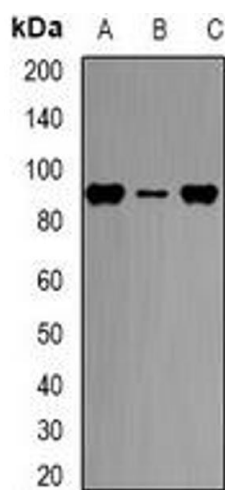
Format:	Liquid
Buffer:	Liquid in 0.42 % Potassium phosphate, 0.87 % Sodium chloride, pH 7.3, 30 % glycerol, and 0.01 % sodium azide.
Preservative:	Sodium azide
Precaution of Use:	This product contains Sodium azide: a POISONOUS AND HAZARDOUS SUBSTANCE which should be handled by trained staff only.
Storage:	-20 °C
Storage Comment:	Shipped at 4°C. Upon delivery aliquot and store at -20°C for one year. Avoid freeze/thaw cycles.
Expiry Date:	12 months

Images



Immunofluorescence

Image 1. Immunofluorescent analysis of CPT1A staining in MCF7 cells. Formalin-fixed cells were permeabilized with 0.1% Triton X-100 in TBS for 5-10 minutes and blocked with 3% BSA-PBS for 30 minutes at room temperature. Cells were probed with the primary antibody



Western Blotting

Image 2. Western blot analysis of CPT1A expression in HL60 (A), THP1 (B), BT474 (C) whole cell lysates.