



Datasheet for ABIN7306242

anti-SGCE antibody



[Go to Product page](#)

3 Images

Overview

Quantity:	100 µL
Target:	SGCE
Reactivity:	Human, Mouse, Rat
Host:	Rabbit
Clonality:	Polyclonal
Conjugate:	This SGCE antibody is un-conjugated
Application:	Western Blotting (WB), Immunohistochemistry (IHC), Immunofluorescence (IF), Immunochromatography (IC)

Product Details

Immunogen:	Recombinant full length protein of human Epsilon-sarcoglycan
Specificity:	Recognizes endogenous levels of Epsilon-sarcoglycan protein.
Characteristics:	Rabbit polyclonal antibody to Epsilon-sarcoglycan
Purification:	The antibody was purified by immunogen affinity chromatography.

Target Details

Target:	SGCE
Alternative Name:	epsilon-Sarcoglycan (SGCE Products)
Background:	ESG, Epsilon-sarcoglycan, Epsilon-SG
Gene ID:	8910, 20392, 432360

Target Details

UniProt: [O43556](#), [O70258](#), [Q6YAT4](#)

Application Details

Application Notes: WB (1:500 - 1:2000), IH (1:50 - 1:200), IF/IC (1:50 - 1:200)

Restrictions: For Research Use only

Handling

Format: Liquid

Buffer: Liquid in 0.42 % Potassium phosphate, 0.87 % Sodium chloride, pH 7.3, 30 % glycerol, and 0.01 % sodium azide.

Preservative: Sodium azide

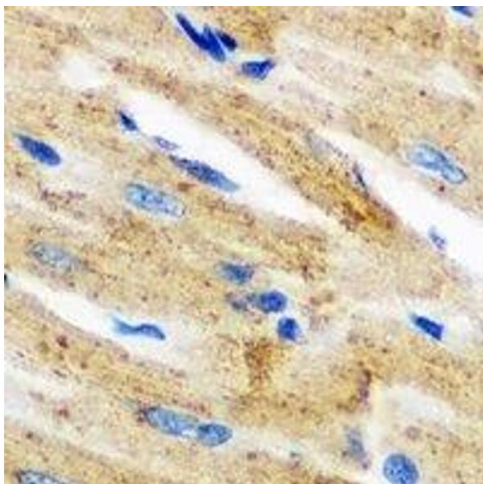
Precaution of Use: This product contains Sodium azide: a POISONOUS AND HAZARDOUS SUBSTANCE which should be handled by trained staff only.

Storage: -20 °C

Storage Comment: Shipped at 4°C. Upon delivery aliquot and store at -20°C for one year. Avoid freeze/thaw cycles.

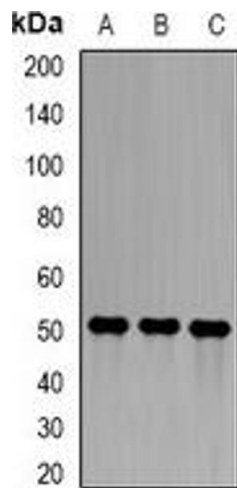
Expiry Date: 12 months

Images



Immunohistochemistry

Image 1. Immunohistochemical analysis of Epsilon-sarcoglycan staining in mouse heart formalin fixed paraffin embedded tissue section. The section was pre-treated using heat mediated antigen retrieval with sodium citrate buffer (pH 6.0). The section was then incuba



Western Blotting

Image 2. Western blot analysis of Epsilon-sarcoglycan expression in A549 (A), ES2 (B), mouse lung (C) whole cell lysates.



Immunofluorescence

Image 3. Immunofluorescent analysis of Epsilon-sarcoglycan staining in HeLa cells. Formalin-fixed cells were permeabilized with 0.1% Triton X-100 in TBS for 5-10 minutes and blocked with 3% BSA-PBS for 30 minutes at room temperature. Cells were probed with the pri