

Datasheet for ABIN7306252  
**anti-Golgin A2 (GOLGA2) antibody**

## 2 Images

[Go to Product page](#)

## Overview

Quantity:	100 µL
Target:	Golgin A2 (GOLGA2)
Reactivity:	Human, Mouse, Rat
Host:	Rabbit
Clonality:	Polyclonal
Conjugate:	Un-conjugated
Application:	Western Blotting (WB), Immunofluorescence (IF), Immunochromatography (IC)

## Product Details

Immunogen:	Recombinant full length protein of human GM130
Specificity:	Recognizes endogenous levels of GM130 protein.
Characteristics:	Rabbit polyclonal antibody to GM130
Purification:	The antibody was purified by immunogen affinity chromatography.

## Target Details

Target:	Golgin A2 (GOLGA2)
Alternative Name:	GM130 ( <a href="#">GOLGA2 Products</a> )
Background:	Golgin subfamily A member 2, 130 kDa cis-Golgi matrix protein, GM130, GM130 autoantigen, Golgin-95
Gene ID:	2801, 99412, 64528

## Target Details

UniProt:	<a href="#">Q08379</a> , <a href="#">Q921M4</a> , <a href="#">Q62839</a>
Pathways:	<a href="#">SARS-CoV-2 Protein Interactome</a>

## Application Details

Application Notes:	WB (1:500 - 1:2000), IF/IC (1:50 - 1:200)
Restrictions:	For Research Use only

## Handling

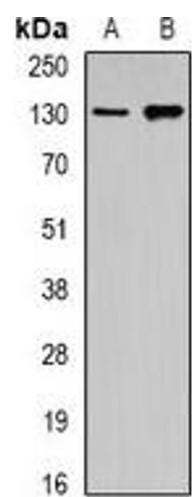
Format:	Liquid
Buffer:	Liquid in 0.42 % Potassium phosphate, 0.87 % Sodium chloride, pH 7.3, 30 % glycerol, and 0.01 % sodium azide.
Preservative:	Sodium azide
Precaution of Use:	This product contains Sodium azide: a POISONOUS AND HAZARDOUS SUBSTANCE which should be handled by trained staff only.
Storage:	-20 °C
Storage Comment:	Shipped at 4°C. Upon delivery aliquot and store at -20°C for one year. Avoid freeze/thaw cycles.
Expiry Date:	12 months

## Images



### Immunofluorescence

**Image 1.** Immunofluorescent analysis of GM130 staining in U2OS cells. Formalin-fixed cells were permeabilized with 0.1% Triton X-100 in TBS for 5-10 minutes and blocked with 3% BSA-PBS for 30 minutes at room temperature. Cells were probed with the primary antibody



Western Blotting

**Image 2.** Western blot analysis of GM130 expression in Raji (A), Hela (B) whole cell lysates.