

Datasheet for ABIN7306262

anti-PSME1 antibody**3** Images[Go to Product page](#)

Overview

Quantity:	100 µL
Target:	PSME1
Reactivity:	Human, Mouse, Rat
Host:	Rabbit
Clonality:	Polyclonal
Conjugate:	This PSME1 antibody is un-conjugated
Application:	Western Blotting (WB), Immunohistochemistry (IHC), Immunofluorescence (IF), Immunochromatography (IC)

Product Details

Immunogen:	Recombinant full length protein of human PA28 alpha
Specificity:	Recognizes endogenous levels of PA28 alpha protein.
Characteristics:	Rabbit polyclonal antibody to PA28 alpha
Purification:	The antibody was purified by immunogen affinity chromatography.

Target Details

Target:	PSME1
Alternative Name:	PA28 alpha (PSME1 Products)
Background:	IFI5111, Proteasome activator complex subunit 1, 11S regulator complex subunit alpha, REG-alpha, Activator of multicatalytic protease subunit 1, Interferon gamma up-regulated I-5111 protein, IGUP I-5111, Proteasome activator 28 subunit alpha, PA28a, PA28alpha

Target Details

Gene ID:	5720, 19186
UniProt:	Q06323 , P97371 , Q63797
Pathways:	Mitotic G1-G1/S Phases , DNA Replication , Positive Regulation of Endopeptidase Activity , Synthesis of DNA

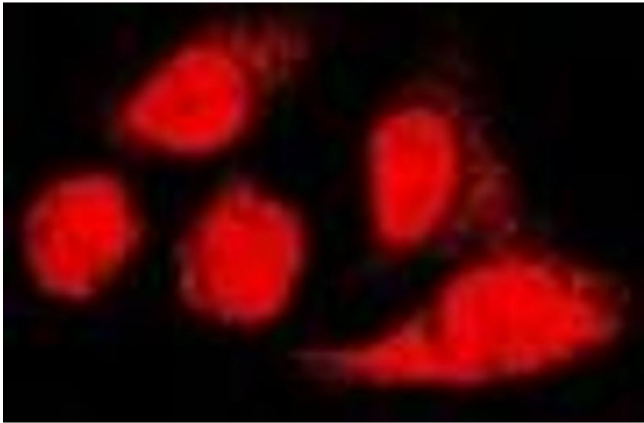
Application Details

Application Notes:	WB (1:500 - 1:2000), IH (1:50 - 1:200), IF/IC (1:50 - 1:200)
Restrictions:	For Research Use only

Handling

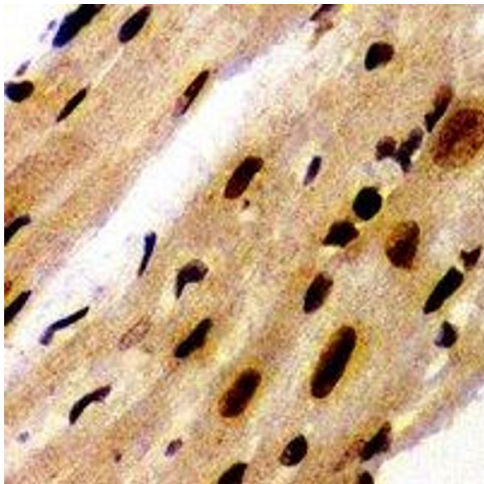
Format:	Liquid
Buffer:	Liquid in 0.42 % Potassium phosphate, 0.87 % Sodium chloride, pH 7.3, 30 % glycerol, and 0.01 % sodium azide.
Preservative:	Sodium azide
Precaution of Use:	This product contains Sodium azide: a POISONOUS AND HAZARDOUS SUBSTANCE which should be handled by trained staff only.
Storage:	-20 °C
Storage Comment:	Shipped at 4°C. Upon delivery aliquot and store at -20°C for one year. Avoid freeze/thaw cycles.
Expiry Date:	12 months

Images



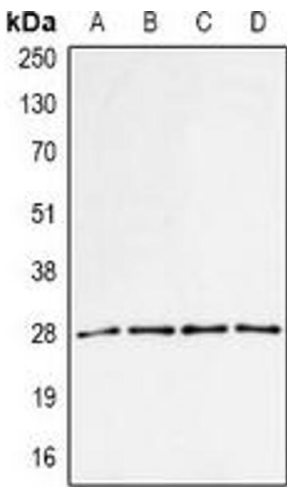
Immunofluorescence

Image 1. Immunofluorescent analysis of PA28 alpha staining in U2OS cells. Formalin-fixed cells were permeabilized with 0.1% Triton X-100 in TBS for 5-10 minutes and blocked with 3% BSA-PBS for 30 minutes at room temperature. Cells were probed with the primary anti



Immunohistochemistry

Image 2. Immunohistochemical analysis of PA28 alpha staining in mouse heart formalin fixed paraffin embedded tissue section. The section was pre-treated using heat mediated antigen retrieval with sodium citrate buffer (pH 6.0). The section was then incubated with



Western Blotting

Image 3. Western blot analysis of PA28 alpha expression in MCF7 (A), BT474 (B), mouse spleen (C), mouse liver (D) whole cell lysates.