

Datasheet for ABIN7306288

anti-BCL11A antibody**2** Images[Go to Product page](#)

Overview

Quantity:	100 µL
Target:	BCL11A
Reactivity:	Human, Mouse, Rat
Host:	Rabbit
Clonality:	Polyclonal
Conjugate:	This BCL11A antibody is un-conjugated
Application:	Western Blotting (WB), Immunohistochemistry (IHC)

Product Details

Immunogen:	Recombinant full length protein of human BCL11A
Specificity:	Recognizes endogenous levels of BCL11A protein.
Characteristics:	Rabbit polyclonal antibody to BCL11A
Purification:	The antibody was purified by immunogen affinity chromatography.

Target Details

Target:	BCL11A
Alternative Name:	BCL11A (BCL11A Products)
Background:	CTIP1, EVI9, KIAA1809, ZNF856, B-cell lymphoma/leukemia 11A, BCL-11A, B-cell CLL/lymphoma 11A, COUP-TF-interacting protein 1, Ecotropic viral integration site 9 protein homolog, EVI-9, Zinc finger protein 856

Target Details

Gene ID:	53335, 14025
UniProt:	Q9H165, Q9QYE3
Pathways:	Regulation of Cell Size

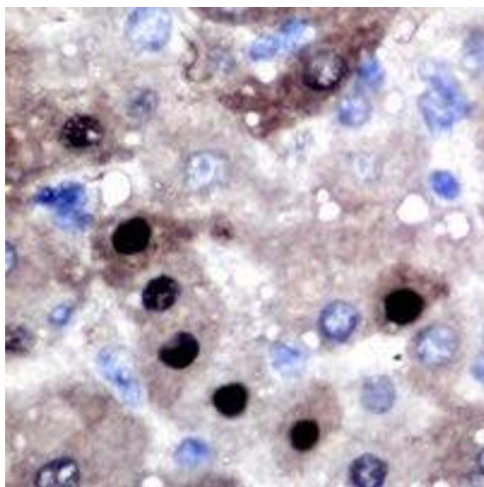
Application Details

Application Notes:	WB (1:500 - 1:2000), IH (1:50 - 1:200)
Restrictions:	For Research Use only

Handling

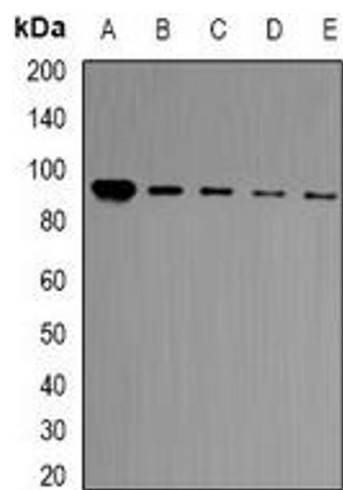
Format:	Liquid
Buffer:	Liquid in 0.42 % Potassium phosphate, 0.87 % Sodium chloride, pH 7.3, 30 % glycerol, and 0.01 % sodium azide.
Preservative:	Sodium azide
Precaution of Use:	This product contains Sodium azide: a POISONOUS AND HAZARDOUS SUBSTANCE which should be handled by trained staff only.
Storage:	-20 °C
Storage Comment:	Shipped at 4°C. Upon delivery aliquot and store at -20°C for one year. Avoid freeze/thaw cycles.
Expiry Date:	12 months

Images



Immunohistochemistry

Image 1. Immunohistochemical analysis of BCL11A staining in human liver cancer formalin fixed paraffin embedded tissue section. The section was pre-treated using heat mediated antigen retrieval with sodium citrate buffer (pH 6.0). The section was then incubated wi



Western Blotting

Image 2. Western blot analysis of BCL11A expression in HT29 (A), Jurkat (B), HeLa (C), A549 (D), mouse brain (E) whole cell lysates.