

Datasheet for ABIN7306322

anti-TLE1 antibody**3** Images[Go to Product page](#)

Overview

Quantity:	100 µL
Target:	TLE1
Reactivity:	Human, Mouse, Rat
Host:	Rabbit
Clonality:	Polyclonal
Conjugate:	This TLE1 antibody is un-conjugated
Application:	Western Blotting (WB), Immunohistochemistry (IHC), Immunofluorescence (IF), Immunochromatography (IC)

Product Details

Immunogen:	Recombinant full length protein of human TLE1
Specificity:	Recognizes endogenous levels of TLE1 protein.
Characteristics:	Rabbit polyclonal antibody to TLE1
Purification:	The antibody was purified by immunogen affinity chromatography.

Target Details

Target:	TLE1
Alternative Name:	TLE1 (TLE1 Products)
Background:	Transducin-like enhancer protein 1, E(Sp1) homolog, Enhancer of split groucho-like protein 1, ESG1

Target Details

Gene ID:	7088, 21885
UniProt:	Q04724 , Q62440
Pathways:	WNT Signaling , SARS-CoV-2 Protein Interactome

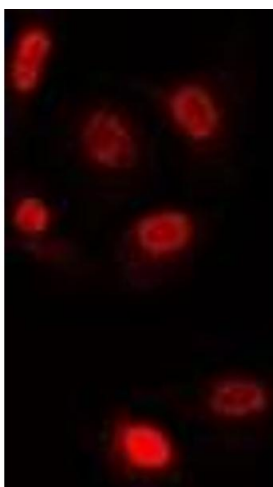
Application Details

Application Notes:	WB (1:500 - 1:2000), IH (1:50 - 1:200), IF/IC (1:50 - 1:200)
Restrictions:	For Research Use only

Handling

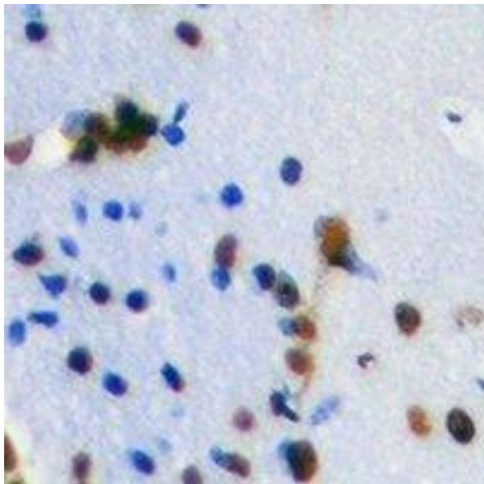
Format:	Liquid
Buffer:	Liquid in 0.42 % Potassium phosphate, 0.87 % Sodium chloride, pH 7.3, 30 % glycerol, and 0.01 % sodium azide.
Preservative:	Sodium azide
Precaution of Use:	This product contains Sodium azide: a POISONOUS AND HAZARDOUS SUBSTANCE which should be handled by trained staff only.
Storage:	-20 °C
Storage Comment:	Shipped at 4°C. Upon delivery aliquot and store at -20°C for one year. Avoid freeze/thaw cycles.
Expiry Date:	12 months

Images



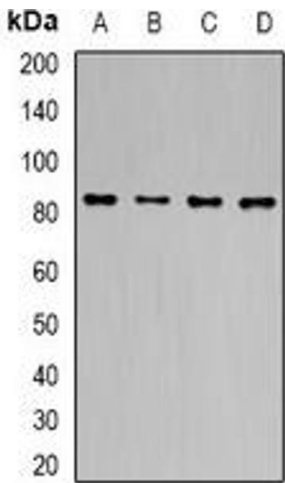
Immunofluorescence

Image 1. Immunofluorescent analysis of TLE1 staining in U2OS cells. Formalin-fixed cells were permeabilized with 0.1% Triton X-100 in TBS for 5-10 minutes and blocked with 3% BSA-PBS for 30 minutes at room temperature. Cells were probed with the primary antibody i



Immunohistochemistry

Image 2. Immunohistochemical analysis of TLE1 staining in mouse brain formalin fixed paraffin embedded tissue section. The section was pre-treated using heat mediated antigen retrieval with sodium citrate buffer (pH 6.0). The section was then incubated with the an



Western Blotting

Image 3. Western blot analysis of TLE1 expression in MCF7 (A), HT29 (B), mouse liver (C), mouse brain (D) whole cell lysates.