

Datasheet for ABIN7306368  
**anti-MECP2 antibody**



[Go to Product page](#)

3 Images

## Overview

Quantity:	100 µL
Target:	MECP2
Reactivity:	Human, Mouse, Rat
Host:	Rabbit
Clonality:	Polyclonal
Conjugate:	This MECP2 antibody is un-conjugated
Application:	Western Blotting (WB), Immunohistochemistry (IHC), Immunofluorescence (IF), Immunochromatography (IC)

## Product Details

Immunogen:	KLH-conjugated synthetic peptide of human MeCP2
Specificity:	Recognizes endogenous levels of MeCP2 protein.
Characteristics:	Rabbit polyclonal antibody to MeCP2
Purification:	The antibody was purified by immunogen affinity chromatography.

## Target Details

Target:	MECP2
Alternative Name:	MeCP2 ( <a href="#">MECP2 Products</a> )
Background:	Methyl-CpG-binding protein 2, MeCp-2 protein, MeCp2
Gene ID:	4204, 17257, 29386

## Target Details

UniProt:	P51608, Q9Z2D6, Q00566
Pathways:	Inositol Metabolic Process, Chromatin Binding, Synaptic Membrane

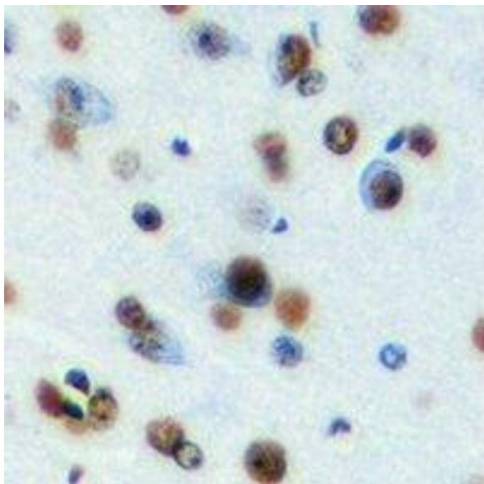
## Application Details

Application Notes:	WB (1:500 - 1:2000), IH (1:50 - 1:200), IF/IC (1:50 - 1:200)
Restrictions:	For Research Use only

## Handling

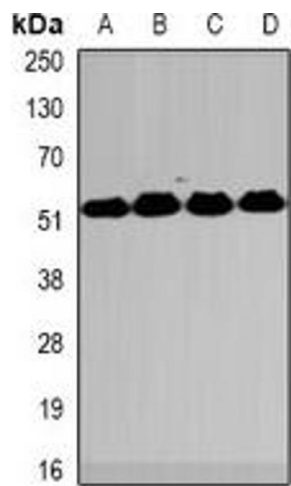
Format:	Liquid
Buffer:	Liquid in 0.42 % Potassium phosphate, 0.87 % Sodium chloride, pH 7.3, 30 % glycerol, and 0.01 % sodium azide.
Preservative:	Sodium azide
Precaution of Use:	This product contains Sodium azide: a POISONOUS AND HAZARDOUS SUBSTANCE which should be handled by trained staff only.
Storage:	-20 °C
Storage Comment:	Shipped at 4°C. Upon delivery aliquot and store at -20°C for one year. Avoid freeze/thaw cycles.
Expiry Date:	12 months

## Images



### Immunohistochemistry

**Image 1.** Immunohistochemical analysis of MeCP2 staining in mouse brain formalin fixed paraffin embedded tissue section. The section was pre-treated using heat mediated antigen retrieval with sodium citrate buffer (pH 6.0). The section was then incubated with the a



### Western Blotting

**Image 2.** Western blot analysis of MeCP2 expression in HT29 (A), Jurkat (B), mouse spleen (C), mouse lung (D) whole cell lysates.



### Immunofluorescence

**Image 3.** Immunofluorescent analysis of MeCP2 staining in U2OS cells. Formalin-fixed cells were permeabilized with 0.1% Triton X-100 in TBS for 5-10 minutes and blocked with 3% BSA-PBS for 30 minutes at room temperature. Cells were probed with the primary antibody