

Datasheet for ABIN7306370

anti-PSMB4 antibody**2** Images[Go to Product page](#)

Overview

Quantity:	100 µL
Target:	PSMB4
Reactivity:	Human, Mouse, Rat
Host:	Rabbit
Clonality:	Polyclonal
Conjugate:	This PSMB4 antibody is un-conjugated
Application:	Western Blotting (WB), Immunofluorescence (IF), Immunochromatography (IC)

Product Details

Immunogen:	Recombinant full length protein of human PSMB4
Specificity:	Recognizes endogenous levels of PSMB4 protein.
Characteristics:	Rabbit polyclonal antibody to PSMB4
Purification:	The antibody was purified by immunogen affinity chromatography.

Target Details

Target:	PSMB4
Alternative Name:	PSMB4 (PSMB4 Products)
Background:	PROS26, Proteasome subunit beta type-4, 26 kDa prosomal protein, HsBPROS26, PROS-26, Macropain beta chain, Multicatalytic endopeptidase complex beta chain, Proteasome beta chain, Proteasome chain 3, HsN3

Target Details

Gene ID:	5692, 19172, 58854
UniProt:	P28070 , P99026 , P34067
Pathways:	Mitotic G1-G1/S Phases , DNA Replication , Synthesis of DNA

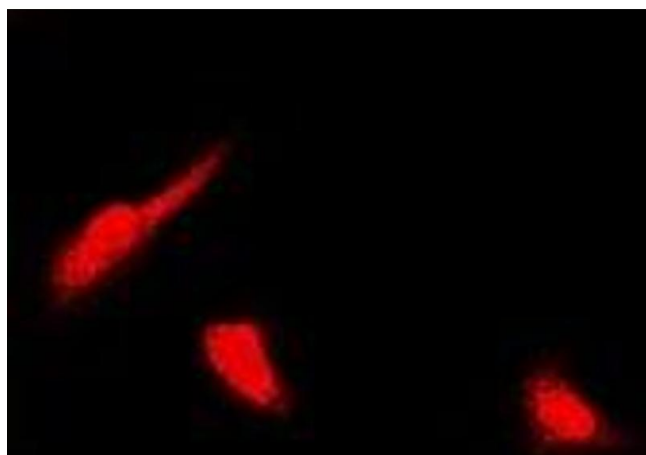
Application Details

Application Notes:	WB (1:500 - 1:2000), IF/IC (1:50 - 1:200)
Restrictions:	For Research Use only

Handling

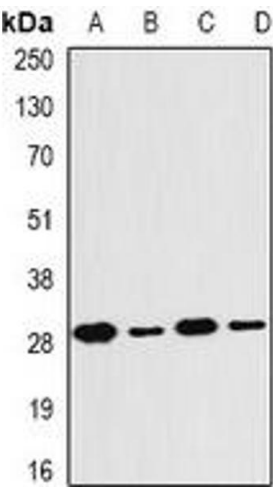
Format:	Liquid
Buffer:	Liquid in 0.42 % Potassium phosphate, 0.87 % Sodium chloride, pH 7.3, 30 % glycerol, and 0.01 % sodium azide.
Preservative:	Sodium azide
Precaution of Use:	This product contains Sodium azide: a POISONOUS AND HAZARDOUS SUBSTANCE which should be handled by trained staff only.
Storage:	-20 °C
Storage Comment:	Shipped at 4°C. Upon delivery aliquot and store at -20°C for one year. Avoid freeze/thaw cycles.
Expiry Date:	12 months

Images



Immunofluorescence

Image 1. Immunofluorescent analysis of PSMB4 staining in U2OS cells. Formalin-fixed cells were permeabilized with 0.1% Triton X-100 in TBS for 5-10 minutes and blocked with 3% BSA-PBS for 30 minutes at room temperature. Cells were probed with the primary antibody



Western Blotting

Image 2. Western blot analysis of PSMB4 expression in MCF7 (A), SKOV3 (B), mouse thymus (C), mouse liver (D) whole cell lysates.