

Datasheet for ABIN7306372

anti-CS antibody**2** Images[Go to Product page](#)

Overview

Quantity:	100 µL
Target:	CS
Reactivity:	Human, Mouse, Rat
Host:	Rabbit
Clonality:	Polyclonal
Conjugate:	This CS antibody is un-conjugated
Application:	Western Blotting (WB), Immunofluorescence (IF), Immunochromatography (IC)

Product Details

Immunogen:	Recombinant full length protein of human Citrate Synthase
Specificity:	Recognizes endogenous levels of Citrate Synthase protein.
Characteristics:	Rabbit polyclonal antibody to Citrate Synthase
Purification:	The antibody was purified by immunogen affinity chromatography.

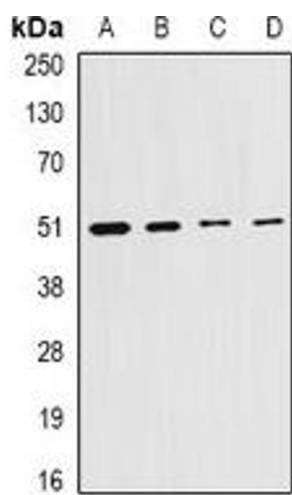
Target Details

Target:	CS
Alternative Name:	Citrate Synthase (CS Products)
Background:	Citrate synthase, mitochondrial, Citrate (Si)-synthase
Gene ID:	1431, 12974, 170587
UniProt:	O75390 , Q9CZU6 , Q8VHF5

Application Details

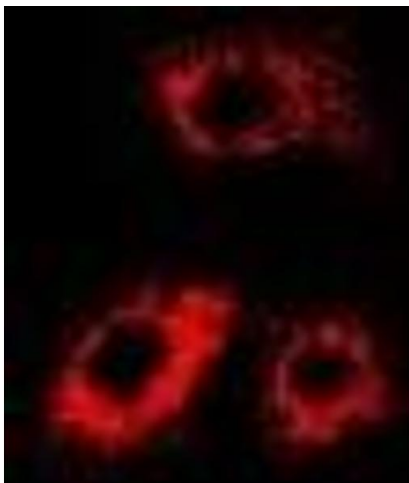
Application Notes:	WB (1:500 - 1:2000), IF/IC (1:50 - 1:200)
Restrictions:	For Research Use only
Handling	
Format:	Liquid
Buffer:	Liquid in 0.42 % Potassium phosphate, 0.87 % Sodium chloride, pH 7.3, 30 % glycerol, and 0.01 % sodium azide.
Preservative:	Sodium azide
Precaution of Use:	This product contains Sodium azide: a POISONOUS AND HAZARDOUS SUBSTANCE which should be handled by trained staff only.
Storage:	-20 °C
Storage Comment:	Shipped at 4°C. Upon delivery aliquot and store at -20°C for one year. Avoid freeze/thaw cycles.
Expiry Date:	12 months

Images



Western Blotting

Image 1. Western blot analysis of Citrate Synthase expression in HepG2 (A), MCF7 (B), mouse liver (C), rat testis (D) whole cell lysates.



Immunofluorescence

Image 2. Immunofluorescent analysis of Citrate Synthase staining in MCF7 cells. Formalin-fixed cells were permeabilized with 0.1% Triton X-100 in TBS for 5-10 minutes and blocked with 3% BSA-PBS for 30 minutes at room temperature. Cells were probed with the primar