

Datasheet for ABIN7306374

**anti-HADHB antibody**

## 2 Images

[Go to Product page](#)

## Overview

Quantity:	100 µL
Target:	HADHB
Reactivity:	Human, Mouse, Rat
Host:	Rabbit
Clonality:	Polyclonal
Conjugate:	This HADHB antibody is un-conjugated
Application:	Western Blotting (WB), Immunofluorescence (IF), Immunochromatography (IC)

## Product Details

Immunogen:	Recombinant full length protein of human HADHB
Specificity:	Recognizes endogenous levels of HADHB protein.
Characteristics:	Rabbit polyclonal antibody to HADHB
Purification:	The antibody was purified by immunogen affinity chromatography.

## Target Details

Target:	HADHB
Alternative Name:	HADHB ( <a href="#">HADHB Products</a> )
Background:	Trifunctional enzyme subunit beta, mitochondrial, TP-beta
Gene ID:	3032, 231086, 171155
UniProt:	<a href="#">P55084</a> , <a href="#">Q99JY0</a> , <a href="#">Q60587</a>

## Target Details

Pathways: [Monocarboxylic Acid Catabolic Process](#)

## Application Details

Application Notes: WB (1:500 - 1:2000), IF/IC (1:10 - 1:100)

Restrictions: For Research Use only

## Handling

Format: Liquid

Buffer: Liquid in 0.42 % Potassium phosphate, 0.87 % Sodium chloride, pH 7.3, 30 % glycerol, and 0.01 % sodium azide.

Preservative: Sodium azide

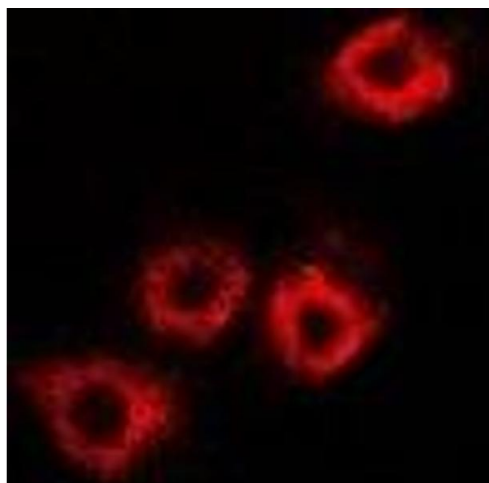
Precaution of Use: This product contains Sodium azide: a POISONOUS AND HAZARDOUS SUBSTANCE which should be handled by trained staff only.

Storage: -20 °C

Storage Comment: Shipped at 4°C. Upon delivery aliquot and store at -20°C for one year. Avoid freeze/thaw cycles.

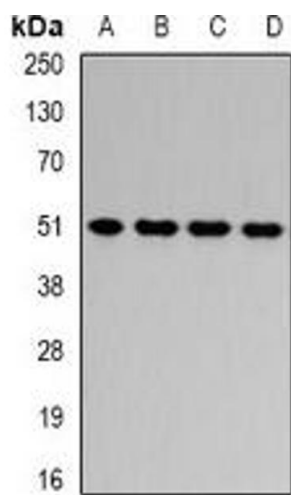
Expiry Date: 12 months

## Images



### Immunofluorescence

**Image 1.** Immunofluorescent analysis of HADHB staining in A549 cells. Formalin-fixed cells were permeabilized with 0.1% Triton X-100 in TBS for 5-10 minutes and blocked with 3% BSA-PBS for 30 minutes at room temperature. Cells were probed with the primary antibody



Western Blotting

**Image 2.** Western blot analysis of HADHB expression in HepG2 (A), Jurkat (B), mouse liver (C), rat liver (D) whole cell lysates.