

Datasheet for ABIN7306394

anti-PCGF6 antibody**2** Images[Go to Product page](#)

Overview

Quantity:	100 µL
Target:	PCGF6
Reactivity:	Human, Mouse
Host:	Rabbit
Clonality:	Polyclonal
Conjugate:	This PCGF6 antibody is un-conjugated
Application:	Western Blotting (WB), Immunofluorescence (IF), Immunochromatography (IC)

Product Details

Immunogen:	Recombinant full length protein of human PCGF6
Specificity:	Recognizes endogenous levels of PCGF6 protein.
Characteristics:	Rabbit polyclonal antibody to PCGF6
Purification:	The antibody was purified by immunogen affinity chromatography.

Target Details

Target:	PCGF6
Alternative Name:	PCGF6 (PCGF6 Products)
Background:	MBLR, RNF134, Polycomb group RING finger protein 6, Mel18 and Bmi1-like RING finger, RING finger protein 134
Gene ID:	84108, 71041

Target Details

UniProt: [Q9BYE7](#), [Q99NA9](#)

Application Details

Application Notes: WB (1:500 - 1:2000), IF/IC (1:50 - 1:100)

Restrictions: For Research Use only

Handling

Format: Liquid

Buffer: Liquid in 0.42 % Potassium phosphate, 0.87 % Sodium chloride, pH 7.3, 30 % glycerol, and 0.01 % sodium azide.

Preservative: Sodium azide

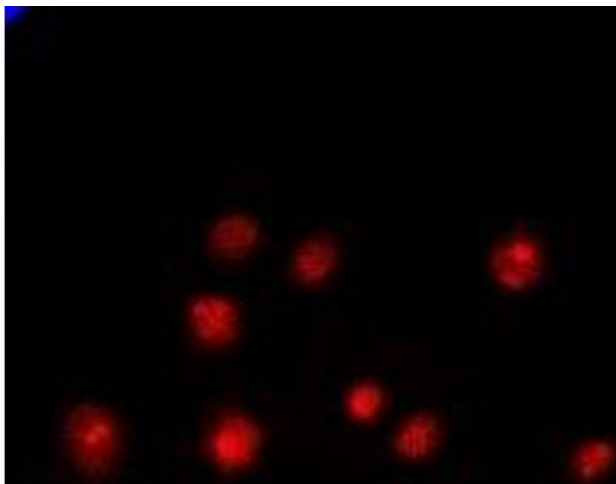
Precaution of Use: This product contains Sodium azide: a POISONOUS AND HAZARDOUS SUBSTANCE which should be handled by trained staff only.

Storage: -20 °C

Storage Comment: Shipped at 4°C. Upon delivery aliquot and store at -20°C for one year. Avoid freeze/thaw cycles.

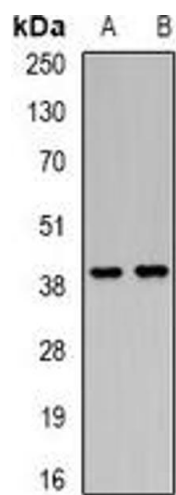
Expiry Date: 12 months

Images



Immunofluorescence

Image 1. Immunofluorescent analysis of PCGF6 staining in HeLa cells. Formalin-fixed cells were permeabilized with 0.1% Triton X-100 in TBS for 5-10 minutes and blocked with 3% BSA-PBS for 30 minutes at room temperature. Cells were probed with the primary antibody



Western Blotting

Image 2. Western blot analysis of PCGF6 expression in MCF7 (A), mouse liver (B) whole cell lysates.