

Datasheet for ABIN7306420

**anti-RMDN3 antibody****2** Images[Go to Product page](#)

## Overview

Quantity:	100 µL
Target:	RMDN3 (FAM82A2)
Reactivity:	Human, Mouse
Host:	Rabbit
Clonality:	Polyclonal
Conjugate:	This RMDN3 antibody is un-conjugated
Application:	Western Blotting (WB), Immunohistochemistry (IHC)

## Product Details

Immunogen:	Recombinant full length protein of human RMDN3
Specificity:	Recognizes endogenous levels of RMDN3 protein.
Characteristics:	Rabbit polyclonal antibody to RMDN3
Purification:	The antibody was purified by immunogen affinity chromatography.

## Target Details

Target:	RMDN3 (FAM82A2)
Alternative Name:	RMDN3 ( <a href="#">FAM82A2 Products</a> )
Background:	FAM82A2, FAM82C, PTPIP51, Regulator of microtubule dynamics protein 3, RMD-3, hRMD-3, Cerebral protein 10, Protein FAM82A2, Protein FAM82C, Protein tyrosine phosphatase-interacting protein 51, TCPTP-interacting protein 51

## Target Details

Gene ID:	55177, 67809
UniProt:	<a href="#">Q96TC7</a> , <a href="#">Q3UJU9</a>

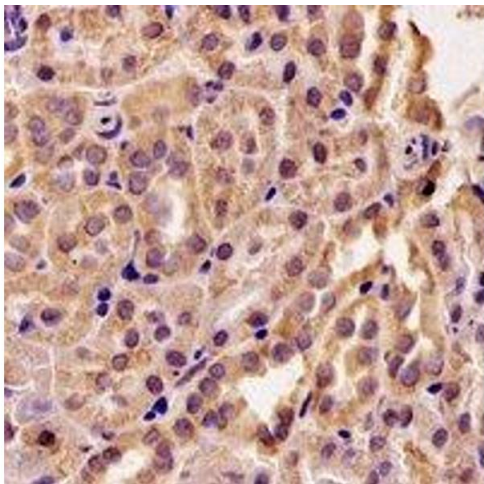
## Application Details

Application Notes:	WB (1:500 - 1:2000), IH (1:50 - 1:200)
Restrictions:	For Research Use only

## Handling

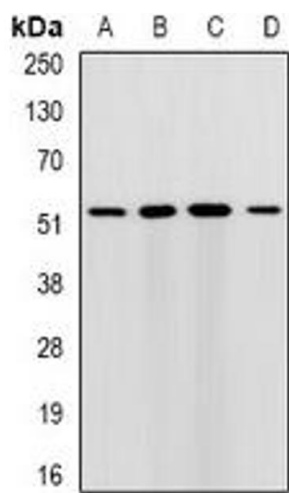
Format:	Liquid
Buffer:	Liquid in 0.42 % Potassium phosphate, 0.87 % Sodium chloride, pH 7.3, 30 % glycerol, and 0.01 % sodium azide.
Preservative:	Sodium azide
Precaution of Use:	This product contains Sodium azide: a POISONOUS AND HAZARDOUS SUBSTANCE which should be handled by trained staff only.
Storage:	-20 °C
Storage Comment:	Shipped at 4°C. Upon delivery aliquot and store at -20°C for one year. Avoid freeze/thaw cycles.
Expiry Date:	12 months

## Images



### Immunohistochemistry

**Image 1.** Immunohistochemical analysis of RMDN3 staining in rat kidney formalin fixed paraffin embedded tissue section. The section was pre-treated using heat mediated antigen retrieval with sodium citrate buffer (pH 6.0). The section was then incubated with the an



Western Blotting

**Image 2.** Western blot analysis of RMDN3 expression in HepG2 (A), MCF7 (B), mouse liver (C), mouse brain (D) whole cell lysates.