

Datasheet for ABIN7306426

anti-SLC11A1 antibody**2** Images[Go to Product page](#)

Overview

Quantity:	100 µL
Target:	SLC11A1
Reactivity:	Human, Rat, Mouse
Host:	Rabbit
Clonality:	Polyclonal
Conjugate:	This SLC11A1 antibody is un-conjugated
Application:	Western Blotting (WB), Immunofluorescence (IF), Chromatin Immunoprecipitation (ChIP), Immunochromatography (IC), Immunoprecipitation (IP)

Product Details

Immunogen:	Recombinant full length protein of human Lsh
Specificity:	Recognizes endogenous levels of Lsh protein.
Characteristics:	Rabbit polyclonal antibody to Lsh
Purification:	The antibody was purified by immunogen affinity chromatography.

Target Details

Target:	SLC11A1
Alternative Name:	Lsh (SLC11A1 Products)
Background:	PASG, SMARCA6, Lymphoid-specific helicase, Proliferation-associated SNF2-like protein, SWI/SNF2-related matrix-associated actin-dependent regulator of chromatin subfamily A member 6

Target Details

Gene ID:	3070, 15201
UniProt:	Q9NRZ9 , Q60848
Pathways:	Transition Metal Ion Homeostasis , Production of Molecular Mediator of Immune Response , Protein targeting to Nucleus

Application Details

Application Notes:	WB (1:500 - 1:2000), IF/IC (1:50 - 1:200), IP (1:50 - 1:200), ChIP (1:20 - 1:100)
Restrictions:	For Research Use only

Handling

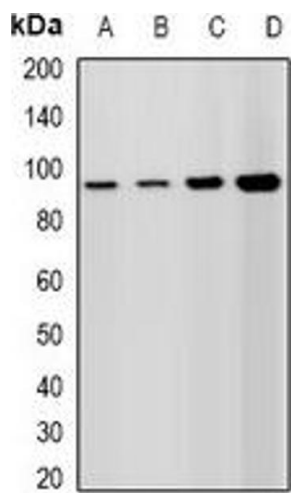
Format:	Liquid
Buffer:	Liquid in 0.42 % Potassium phosphate, 0.87 % Sodium chloride, pH 7.3, 30 % glycerol, and 0.01 % sodium azide.
Preservative:	Sodium azide
Precaution of Use:	This product contains Sodium azide: a POISONOUS AND HAZARDOUS SUBSTANCE which should be handled by trained staff only.
Storage:	-20 °C
Storage Comment:	Shipped at 4°C. Upon delivery aliquot and store at -20°C for one year. Avoid freeze/thaw cycles.
Expiry Date:	12 months

Images



Immunofluorescence

Image 1. Immunofluorescent analysis of Lsh staining in A549 cells. Formalin-fixed cells were permeabilized with 0.1% Triton X-100 in TBS for 5-10 minutes and blocked with 3% BSA-PBS for 30 minutes at room temperature. Cells were probed with the primary antibody in



Western Blotting

Image 2. Western blot analysis of Lsh expression in A549 (A), HepG2 (B), mouse spleen (C), rat testis (D) whole cell lysates.