

Datasheet for ABIN7306434

anti-PHC1 antibody

2 Images

[Go to Product page](#)

Overview

Quantity:	100 µL
Target:	PHC1
Reactivity:	Human, Rat, Mouse
Host:	Rabbit
Clonality:	Polyclonal
Conjugate:	This PHC1 antibody is un-conjugated
Application:	Western Blotting (WB), Immunohistochemistry (IHC)

Product Details

Immunogen:	Recombinant full length protein of human PHC1
Specificity:	Recognizes endogenous levels of PHC1 protein.
Characteristics:	Rabbit polyclonal antibody to PHC1
Purification:	The antibody was purified by immunogen affinity chromatography.

Target Details

Target:	PHC1
Alternative Name:	PHC1 (PHC1 Products)
Background:	EDR1, PH1, Polyhomeotic-like protein 1, hPH1, Early development regulatory protein 1
Gene ID:	1911, 13619
UniProt:	P78364 , Q64028

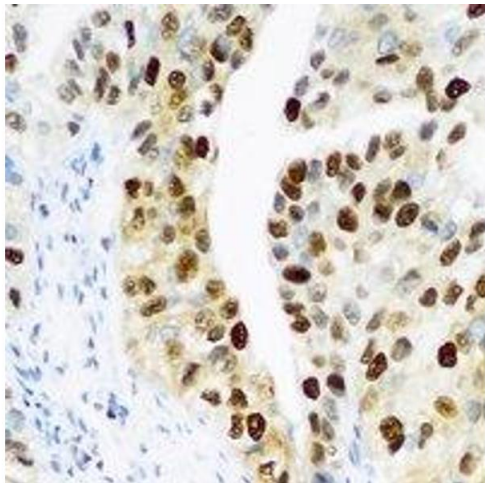
Application Details

Application Notes:	WB (1:500 - 1:2000), IH (1:50 - 1:200)
Restrictions:	For Research Use only

Handling

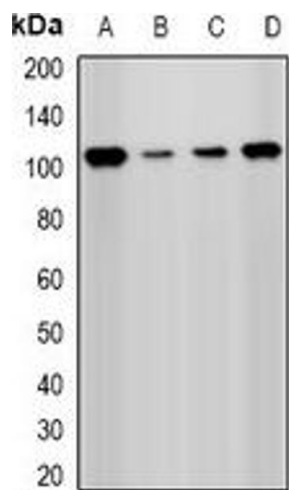
Format:	Liquid
Buffer:	Liquid in 0.42 % Potassium phosphate, 0.87 % Sodium chloride, pH 7.3, 30 % glycerol, and 0.01 % sodium azide.
Preservative:	Sodium azide
Precaution of Use:	This product contains Sodium azide: a POISONOUS AND HAZARDOUS SUBSTANCE which should be handled by trained staff only.
Storage:	-20 °C
Storage Comment:	Shipped at 4°C. Upon delivery aliquot and store at -20°C for one year. Avoid freeze/thaw cycles.
Expiry Date:	12 months

Images



Immunohistochemistry

Image 1. Immunohistochemical analysis of PHC1 staining in human prostate formalin fixed paraffin embedded tissue section. The section was pre-treated using heat mediated antigen retrieval with sodium citrate buffer (pH 6.0). The section was then incubated with the



Western Blotting

Image 2. Western blot analysis of PHC1 expression in Hela (A), Jurkat (B), A549 (C), mouse kidney (D) whole cell lysates.