

Datasheet for ABIN7306458
anti-SMARCC1 antibody[Go to Product page](#)

2 Images

Overview

Quantity:	100 µL
Target:	SMARCC1
Reactivity:	Human, Rat, Mouse
Host:	Rabbit
Clonality:	Polyclonal
Conjugate:	This SMARCC1 antibody is un-conjugated
Application:	Western Blotting (WB), Immunoprecipitation (IP), Immunohistochemistry (IHC), Chromatin Immunoprecipitation (ChIP)

Product Details

Immunogen:	Recombinant full length protein of human BAF155
Specificity:	Recognizes endogenous levels of BAF155 protein.
Characteristics:	Rabbit polyclonal antibody to BAF155
Purification:	The antibody was purified by immunogen affinity chromatography.

Target Details

Target:	SMARCC1
Alternative Name:	BAF155 (SMARCC1 Products)
Background:	BAF155, SWI/SNF complex subunit SMARCC1, BRG1-associated factor 155, BAF155, SWI/SNF complex 155 kDa subunit, SWI/SNF-related matrix-associated actin-dependent regulator of chromatin subfamily C member 1

Target Details

Gene ID:	6599, 20588
UniProt:	Q92922 , P97496
Pathways:	Chromatin Binding

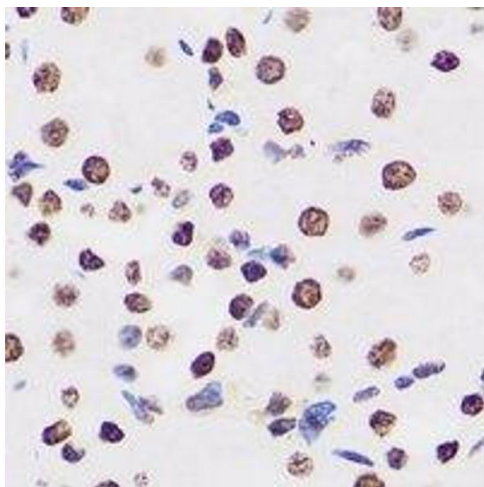
Application Details

Application Notes:	WB (1:500 - 1:2000), IH (1:50 - 1:200), IP (1:50 - 1:200), ChIP (1:20 - 1:100)
Restrictions:	For Research Use only

Handling

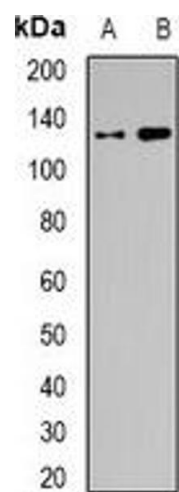
Format:	Liquid
Buffer:	Liquid in 0.42 % Potassium phosphate, 0.87 % Sodium chloride, pH 7.3, 30 % glycerol, and 0.01 % sodium azide.
Preservative:	Sodium azide
Precaution of Use:	This product contains Sodium azide: a POISONOUS AND HAZARDOUS SUBSTANCE which should be handled by trained staff only.
Storage:	-20 °C
Storage Comment:	Shipped at 4°C. Upon delivery aliquot and store at -20°C for one year. Avoid freeze/thaw cycles.
Expiry Date:	12 months

Images



Immunohistochemistry

Image 1. Immunohistochemical analysis of BAF155 staining in human kidney formalin fixed paraffin embedded tissue section. The section was pre-treated using heat mediated antigen retrieval with sodium citrate buffer (pH 6.0). The section was then incubated with the



Western Blotting

Image 2. Western blot analysis of BAF155 expression in SW620 (A), HEK293T (B) whole cell lysates.