

Datasheet for ABIN7306466

anti-CTCFL antibody**2** Images[Go to Product page](#)

Overview

Quantity:	100 µL
Target:	CTCFL
Reactivity:	Human, Mouse, Rat
Host:	Rabbit
Clonality:	Polyclonal
Conjugate:	This CTCFL antibody is un-conjugated
Application:	Western Blotting (WB), Immunofluorescence (IF), Immunochromatography (IC)

Product Details

Immunogen:	Recombinant full length protein of human BORIS
Specificity:	Recognizes endogenous levels of BORIS protein.
Characteristics:	Rabbit polyclonal antibody to BORIS
Purification:	The antibody was purified by immunogen affinity chromatography.

Target Details

Target:	CTCFL
Alternative Name:	BORIS (CTCFL Products)
Background:	BORIS, Transcriptional repressor CTCFL, Brother of the regulator of imprinted sites, CCCTC-binding factor, CTCF paralog, CTCF-like protein, Cancer/testis antigen 27, CT27, Zinc finger protein CTCF-T

Target Details

Gene ID: 140690, 664799

UniProt: [Q8NI51](#), [A2APF3](#)

Application Details

Application Notes: WB (1:500 - 1:2000), IF/IC (1:20 - 1:100)

Restrictions: For Research Use only

Handling

Format: Liquid

Buffer: Liquid in 0.42 % Potassium phosphate, 0.87 % Sodium chloride, pH 7.3, 30 % glycerol, and 0.01 % sodium azide.

Preservative: Sodium azide

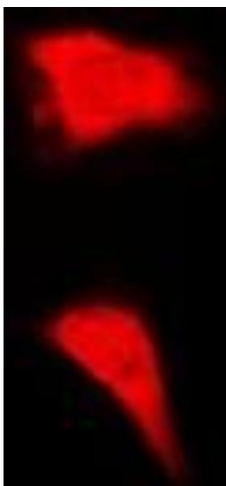
Precaution of Use: This product contains Sodium azide: a POISONOUS AND HAZARDOUS SUBSTANCE which should be handled by trained staff only.

Storage: -20 °C

Storage Comment: Shipped at 4°C. Upon delivery aliquot and store at -20°C for one year. Avoid freeze/thaw cycles.

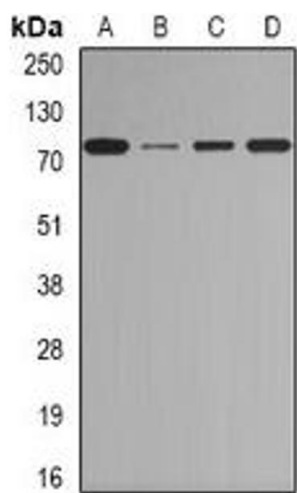
Expiry Date: 12 months

Images



Immunofluorescence

Image 1. Immunofluorescent analysis of BORIS staining in MCF7 cells. Formalin-fixed cells were permeabilized with 0.1% Triton X-100 in TBS for 5-10 minutes and blocked with 3% BSA-PBS for 30 minutes at room temperature. Cells were probed with the primary antibody



Western Blotting

Image 2. Western blot analysis of BORIS expression in Jurkat (A), Hela (B), mouse heart (C), rat testis (D) whole cell lysates.